

WP4 one year overview

4th Executive Board meeting

Brussels, 2nd December 2014



Enrique Bernal

Institute for Health Sciences in Aragon (IACS),
Spain

Planned activities during the 1st year

Tasks/ Deliverables	Due time	Deviation	Reasons	% accomplishment	Expected delivery
Agreement on a modified calendar	N	6 months	Required after kick off meeting	done	Inclusion in the Amendment
4.1.1 Selection of Assessment Criteria: Delphi HealthProm&Prev.	N	3 months	Accommodation to new timeline + delays on background material first Delphi	pending	Delphi 1 – May 2015
4.1.1 Selection of Assessment Criteria: consensus tool	N	3 months	Linked to Delphi 1 delay	done	Ready for Delphi 1 launching Dec 2nd
4.6: Technological Platform: PKE user requirements design	Y	-	-	<ul style="list-style-type: none"> • Background decisions done • Platform structure ready to implement functionalities • User requirements pending EB approval 	June 2015 – first assessment tools implemented

Highlights

- Delphi tool and first questionnaire (user5/38925)
<http://chrodis-d1.healthconsensus.net/>
- PKE background decisions
 - JAVA language – open source and full integration with other functionalities
 - Virtual machines hosted in a centralized node – scalability
 - Liferay as Content Management System – customizable and scalable
 - National Library MESH as content taxonomy – search engine
 - Dublin Core as XML metadata standard – interoperability
- PKE user requirements – pending approval
- Fluid communication with the rest of WP leaders, and EIP-AHA

WP4 Decisions/propositions for the Future

- WP#4 partners meeting – meant to clarify tasks allocation
 - TC December 12th
 - F2F meeting Brussels, Feb 19th
- Sustainability
 - EIP-AHA
 - Multiple synergies or risk of overlapping - ToR for collaboration
 - PKE Business Plan
 - PKE, as it is right now is conceived as a pilot ready for scaling up

EIP-AHA collaboration:

... under discussion

- Reviewing the foreground produced as background for Delphi panels
 - concepts and more than 370 practices;
- Using their Action Group experts as panellists and reviewers;
- Assessing EIP-AHA practices using PKE methodology;
- Including EIP-AHA practices in the Clearinghouse;
- PKE as platform for EIP-AHA?

Platform for knowledge exchange **Analysis of Requirements**

(draft 20141026)

IACS-IIS Aragón
ISCIH – Unit for Telemedicine
on behalf of WP#4 partners

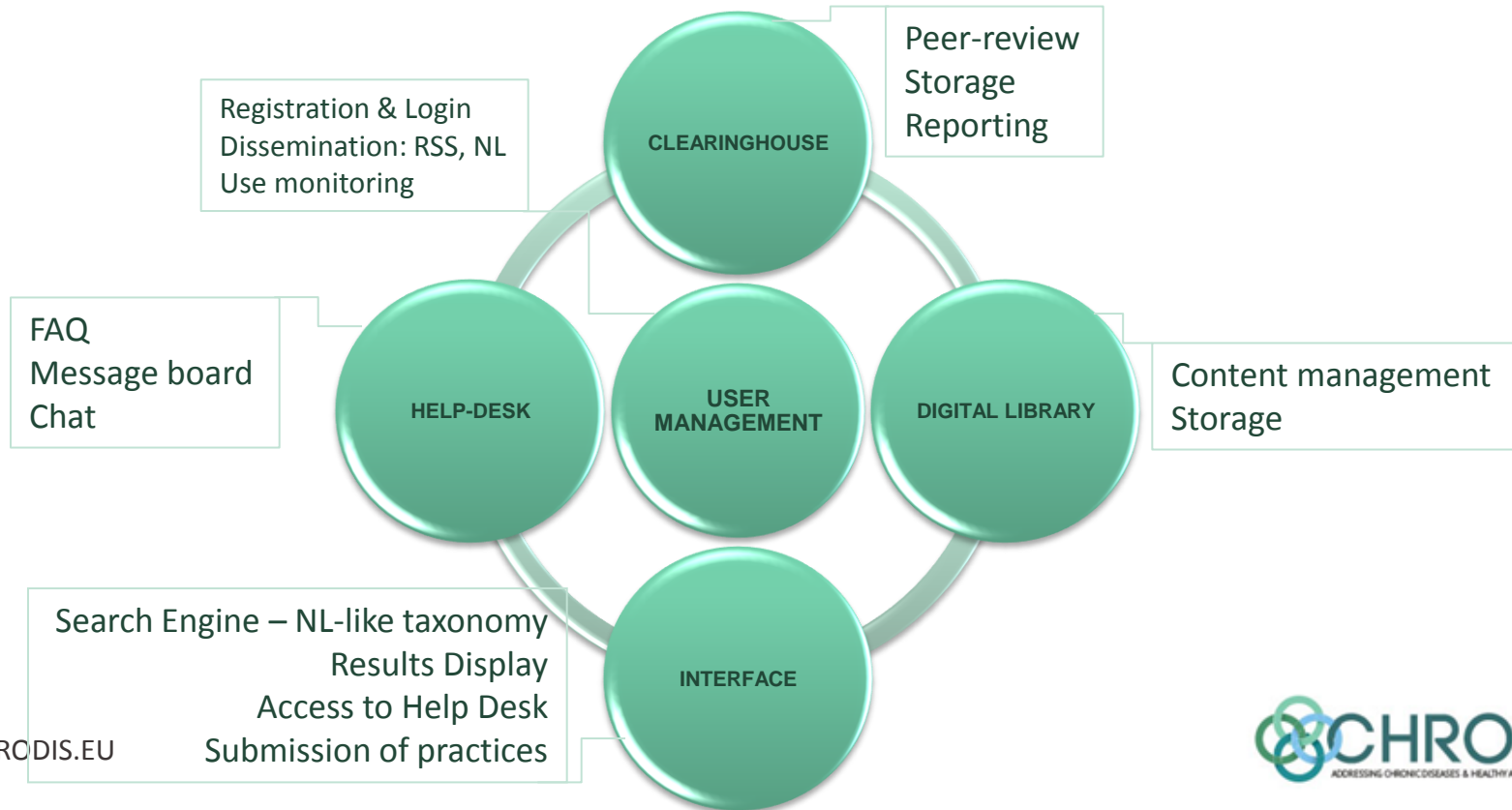
- This document synthesizes the Technical Requirements needed for the development of the Platform for Knowledge Exchange (PKE).
- The document provides insight on the structure and functionalities of the PKE, the different users and workflows, and poses some critical questions to be debated in the EB.
- We aim to debate this document with the Executive Board - get your questions and suggestions, and hopefully, approve it in order to start the development of the PKE before the Christmas break.

Scope

The platform is designed as a collaborative web-based single access point where decision-makers, caregivers, patients, and researchers across the EU will find and share the best knowledge on “chronic care”. The PKE will include:

- **On line tools** to allow the **evaluation of practices** using the assessment criteria agreed by EU experts;
- A **clearinghouse** of excellent chronic disease practices and policies across Europe, selected on those criteria;
- A **digital library** collecting a variety of contents associated to chronic care;
- An **online helpdesk** with **expert consultants** and a **tailoring toolkit** meant to advise users on the development, implementation and evaluation of chronic disease practices.

BASIC STRUCTURE AND FUNCTIONALITIES



PKE: 5 HUMAN ACTORS

- User
- Reviewer
- Referee
- Help-desk manager
- System administrator

User: all functionalities except those reserved to reviewers and referees
Reviewer: user's attributions plus reviewing functionalities
Referee: reviewers' attributions plus referee functionalities

NB. Users can be reviewers and referees, reviewers can be referees

PKE ACTORS and FUNCTIONALITIES

- User
 - *Manages of his/her profile*
 - *Manages of the PKE notifications*
- Reviewer
 - *Submits a practice for evaluation*
 - *Searches for specific registries/entries in the Clearinghouse*
 - *Stores a defined number of specific search queries in his/her profile*
 - *Accesses all best practices stored in the Clearinghouse*
 - *Downloads a best practice (including metadata)*
- Referee
 - *Submits multimedia content to be published in the Digital Library*
 - *Searches specific contents inside the Digital Resources Library*
 - *Downloads accessed content from the Digital Resources Library*
- HD manager
 - *Communicates with the Help-desk manager for support*
 - *Uses the tailoring toolkit to assess and/or improve his/her experiences*
- Admin
 - *Contributes to ensure PKE quality*
 - *Re-shapes the platform by identifying needs and improvements*
 - *Supports practices stored within the clearinghouse by giving a positive vote (stars/flags system)*

PKE ACTORS and FUNCTIONALITIES

- User
 - Reviewer
 - Referee
 - HD manager
 - Admin
- *Assess the practices submitted to the Clearinghouse, using the assessment tools built from the Delphi panels*
 - *Scores practices according to the on-line questionnaire*
 - *Classifies practices according to the meta-data questionnaire*
 - *Approves any content submitted to the Digital Library*
 - *Provides keywords to the contents published in the Digital Library*
 - *Acts as consultant guiding users in their area of competence*

PKE ACTORS and FUNCTIONALITIES

- User
 - Reviewer
 - **Referee**
 - HD manager
 - Admin
- *Solves disagreement between two reviewers in the application of the CHRODIS criteria*

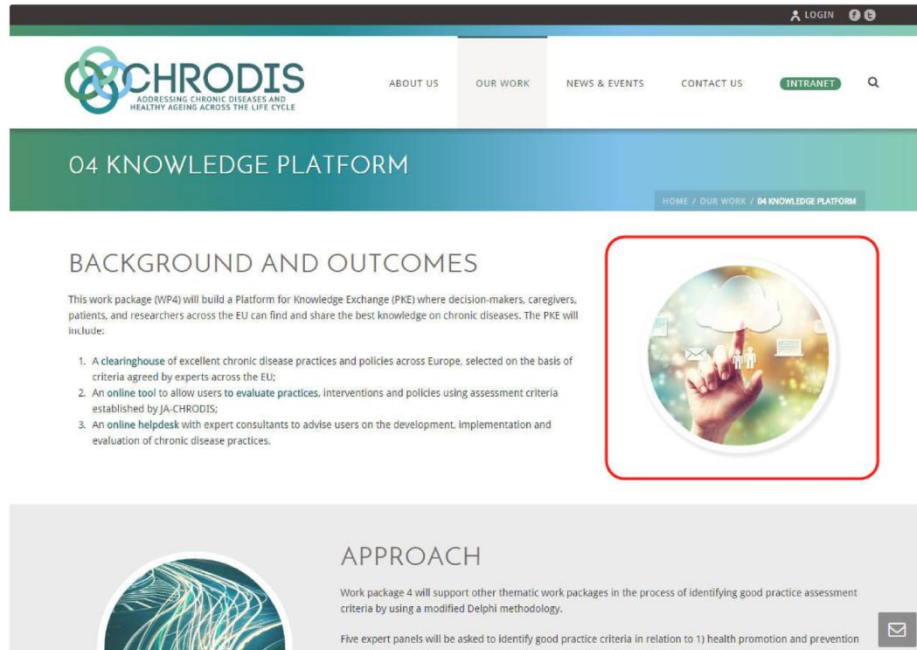
PKE ACTORS and FUNCTIONALITIES

- User
 - Reviewer
 - Referee
 - HD manager
 - Admin
- *Acts as the contact point between users and PKE, throughout synchronous and asynchronous communication systems.*
 - *Creates and sustains a knowledge base on the use of PKE: FAQ, tutorials, and other guidance material*
 - *Manages the glossary of terms for the PKE*
 - *Assists users on the use of all PKE functionalities: submission of practices or contents, assessment process, use of the tailoring toolkit, etc.*
 - *Manages suggestions mailbox*

PKE ACTORS and FUNCTIONALITIES

- User
 - Reviewer
 - Referee
 - HD manager
 - Admin
- *Maintains the PKE* (e.g., bugs reports, work-load reports, etc.)
 - *Assures the availability of the PKE infrastructure*
 - *Analyses users' metrics* (e.g., #practices submitted, # contents uploaded, # searches by user, etc.)

Accessing PKE throughout CHRODIS website



The screenshot displays the CHRODIS website interface. At the top, the CHRODIS logo is on the left, and navigation links for 'ABOUT US', 'OUR WORK', 'NEWS & EVENTS', and 'CONTACT US' are in the center. A 'LOGIN' button and a search icon are on the right. Below the navigation is a green banner with the text '04 KNOWLEDGE PLATFORM'. Underneath, the breadcrumb trail reads 'HOME / OUR WORK / 04 KNOWLEDGE PLATFORM'. The main content area is titled 'BACKGROUND AND OUTCOMES' and includes a paragraph: 'This work package (WP4) will build a Platform for Knowledge Exchange (PKE) where decision-makers, caregivers, patients, and researchers across the EU can find and share the best knowledge on chronic diseases. The PKE will include:'. A red box highlights a circular image of a hand pointing at a screen with icons for a cloud, mail, and people. Below this, a list of three points is provided: 1. A clearinghouse of excellent chronic disease practices and policies across Europe, selected on the basis of criteria agreed by experts across the EU; 2. An online tool to allow users to evaluate practices, interventions and policies using assessment criteria established by JA-CHRODIS; 3. An online helpdesk with expert consultants to advise users on the development, implementation and evaluation of chronic disease practices. At the bottom, the 'APPROACH' section features a circular image of a brain scan and text: 'Work package 4 will support other thematic work packages in the process of identifying good practice assessment criteria by using a modified Delphi methodology. Five expert panels will be asked to identify good practice criteria in relation to 1) health promotion and prevention'. A small envelope icon is visible in the bottom right corner of the screenshot.

CHRODIS
ADDRESSING CHRONIC DISEASES AND HEALTHY AGEING ACROSS THE LIFE CYCLE

ABOUT US OUR WORK NEWS & EVENTS CONTACT US INTRANET

04 KNOWLEDGE PLATFORM

HOME / OUR WORK / 04 KNOWLEDGE PLATFORM

BACKGROUND AND OUTCOMES

This work package (WP4) will build a Platform for Knowledge Exchange (PKE) where decision-makers, caregivers, patients, and researchers across the EU can find and share the best knowledge on chronic diseases. The PKE will include:

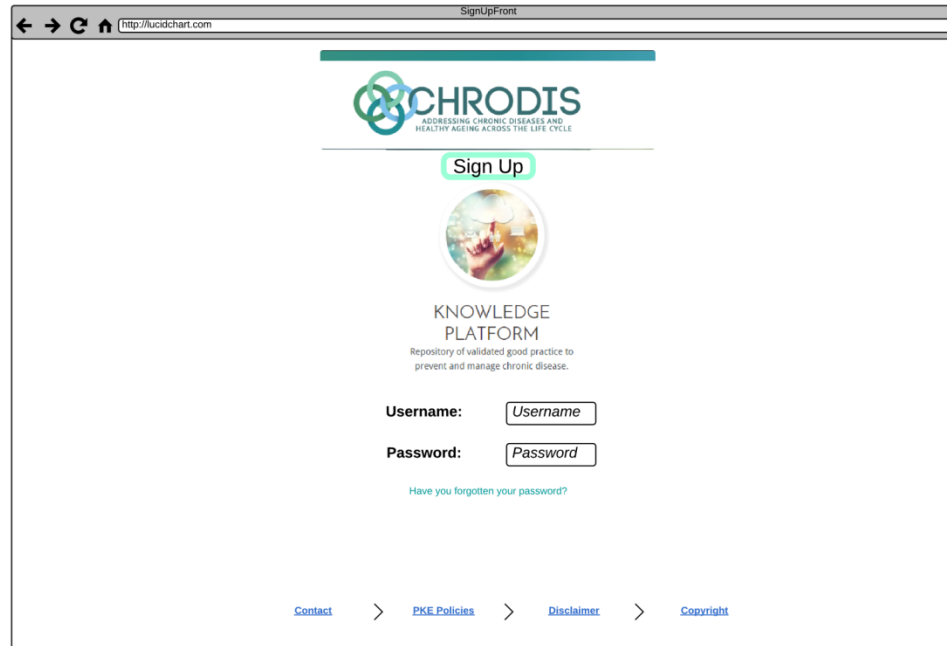
1. A clearinghouse of excellent chronic disease practices and policies across Europe, selected on the basis of criteria agreed by experts across the EU;
2. An online tool to allow users to evaluate practices, interventions and policies using assessment criteria established by JA-CHRODIS;
3. An online helpdesk with expert consultants to advise users on the development, implementation and evaluation of chronic disease practices.

APPROACH

Work package 4 will support other thematic work packages in the process of identifying good practice assessment criteria by using a modified Delphi methodology.

Five expert panels will be asked to identify good practice criteria in relation to 1) health promotion and prevention

Front page (blueprint)



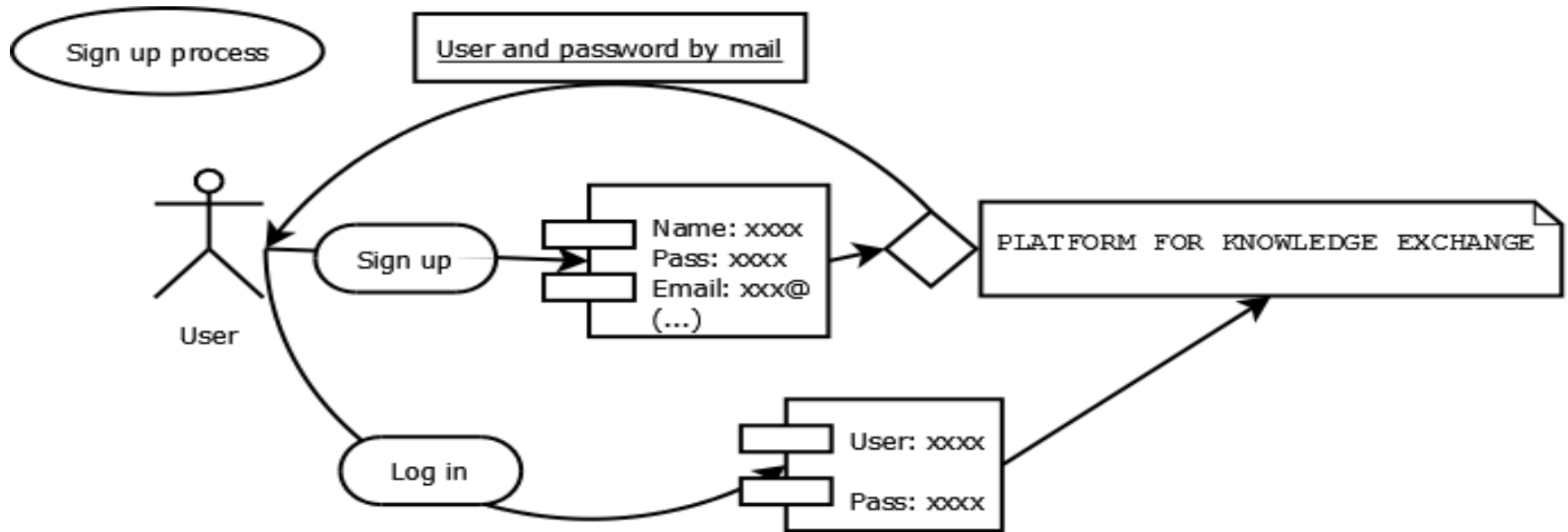
NB: As a 1st step, user have to register in the front page

Registration form (blueprint)

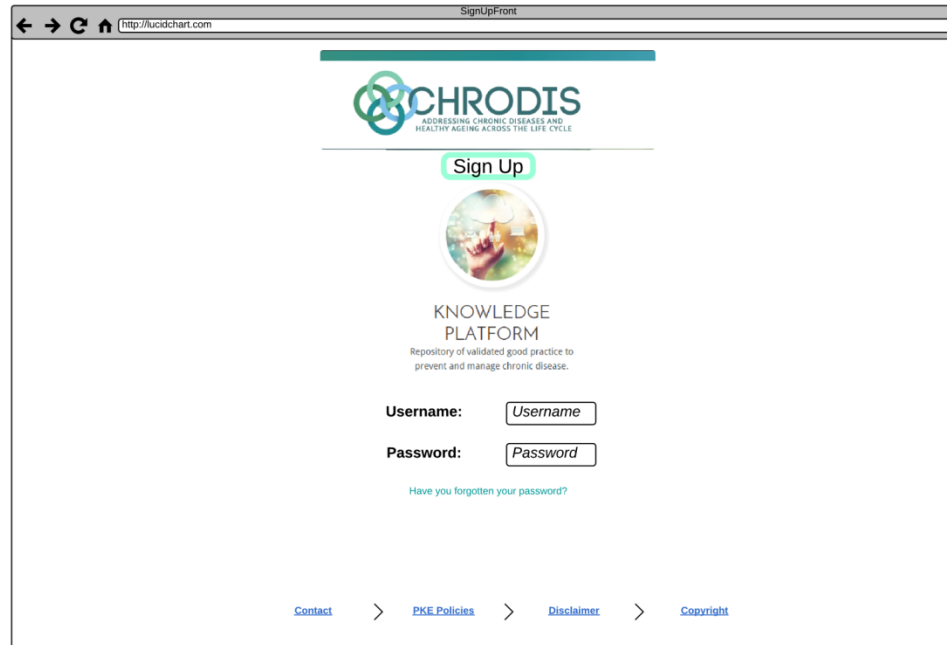
The screenshot shows a web browser window titled "SignUp-Form" with the URL "http://lucidchart.com". The form layout is as follows:

- Header:** A placeholder box with an 'X' and a question mark icon.
- Personal Information:**
 - Title:
 - Name:
 - Family Name:
- Contact Information:**
 - Position:
 - Organization:
 - Address:
 - Telephone:
 - E-mail:
 - Country:
 - Three additional empty text input fields.
- Stakeholder Information:**
 - Type of Stakeholder:
 - Area of interest:
 - Condition:
- Footer:** Social media icons for Twitter, Facebook, and LinkedIn; a red CAPTCHA box with the text "CAPTCHA" and an input field; and a "Submit" button.

Registration and log in

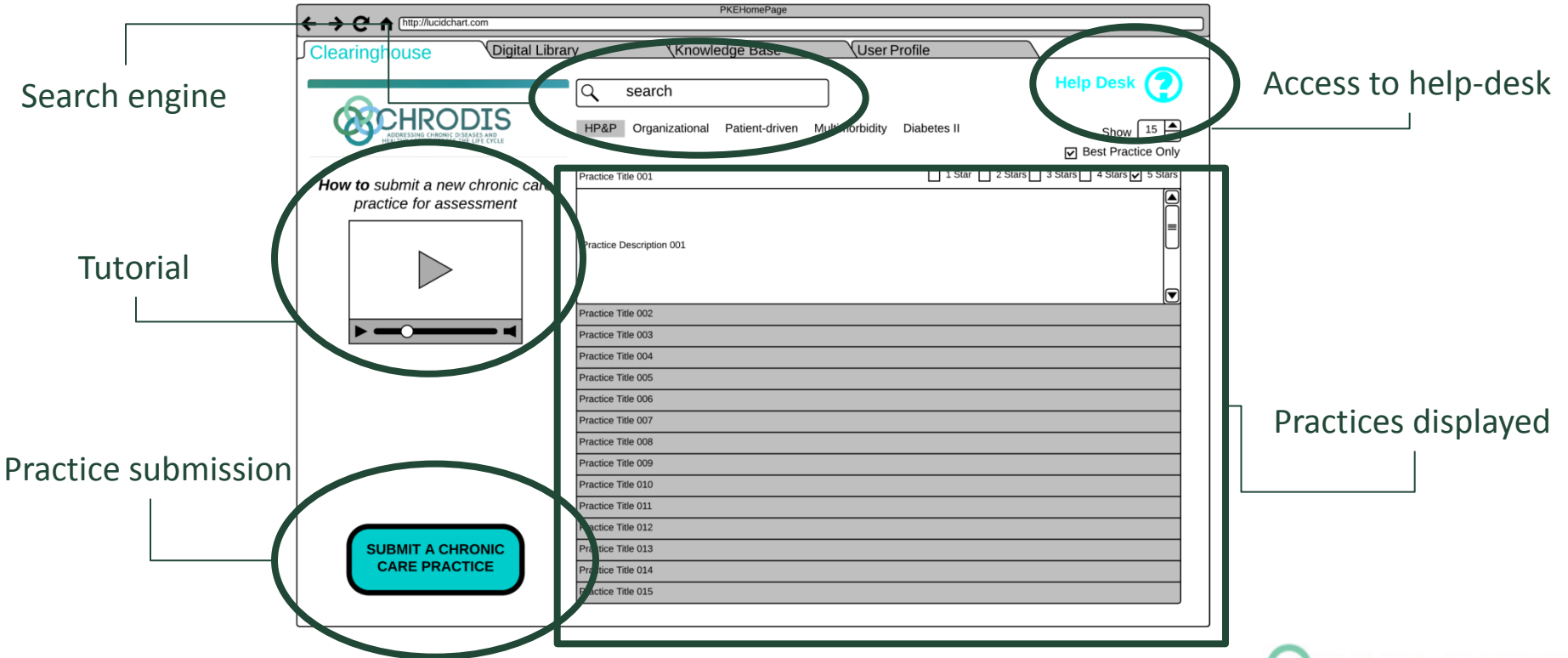


Front page (blueprint)



NB: Once registered, user can log in and enter the PKE

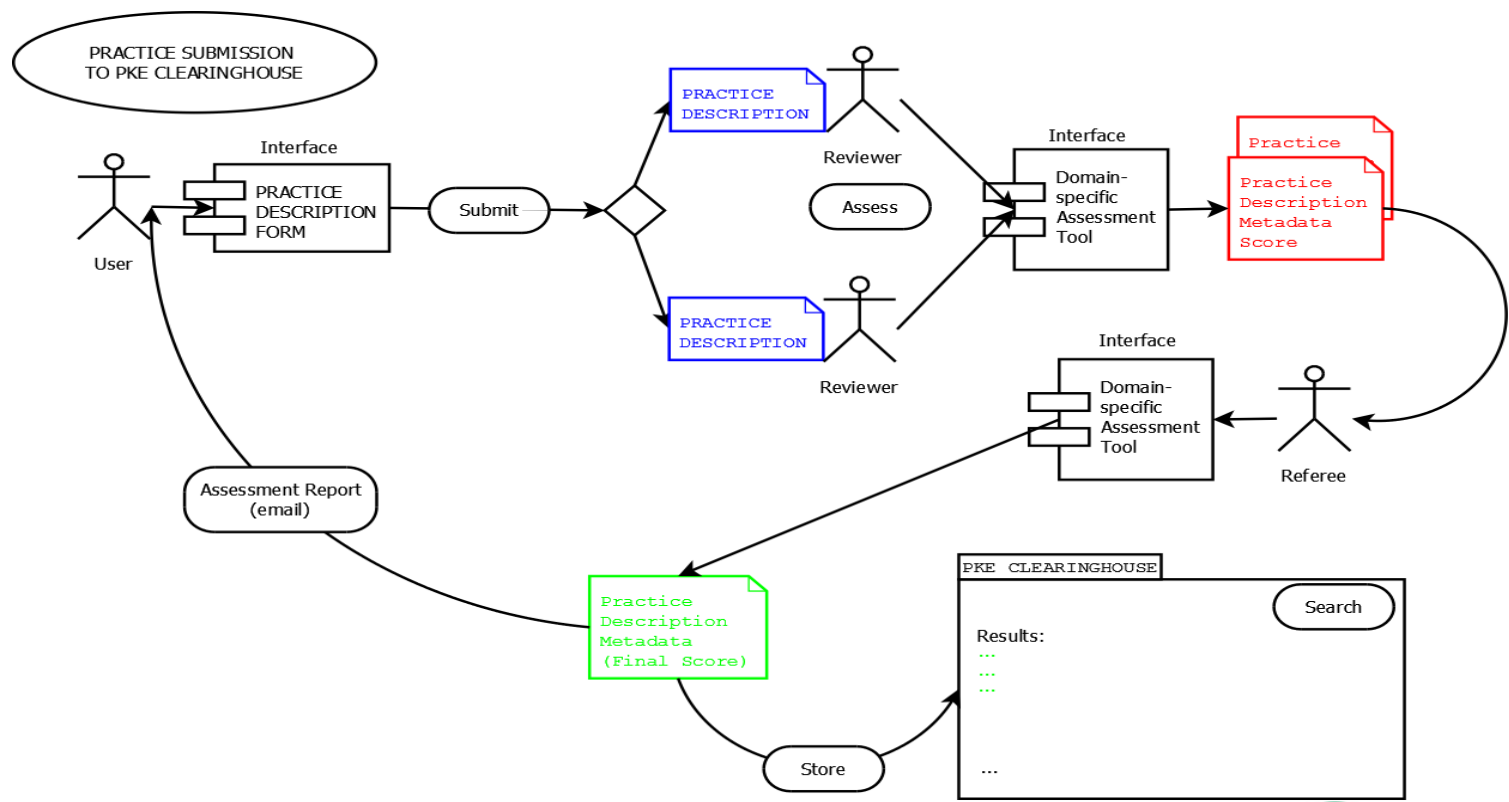
Users' interface (blueprint)



NB: this is a blueprint only meant to show the various functionalities of the clearinghouse.

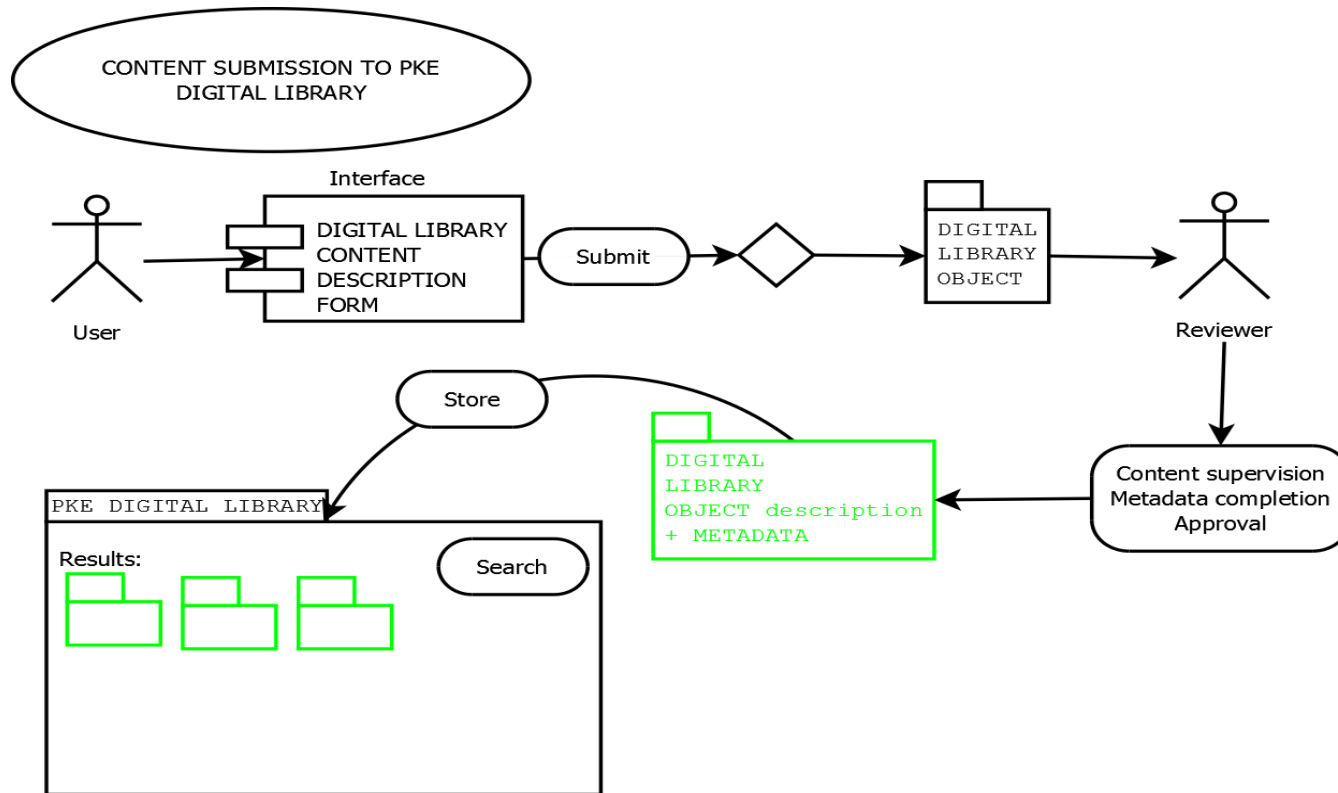
Submitting a practice – workflow 1

(includes peer-review assessment process)

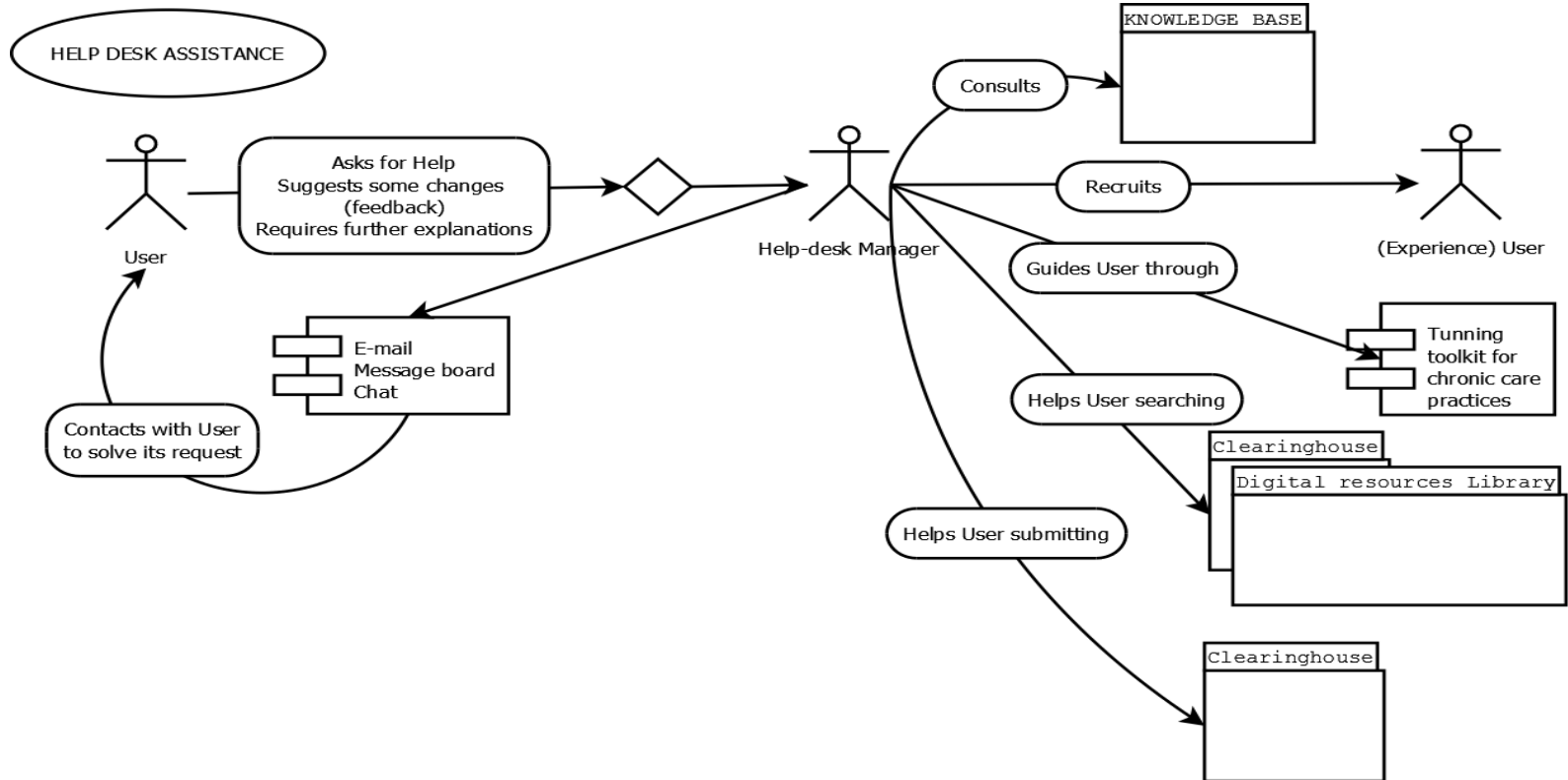


Submitting other contents – workflow 2

(includes a filtering process to discard inadequate materials)



Help Desk Assistance – workflow 3



QUESTIONS FOR DEBATE (1)

- Have we missed some other functionalities?
- The system is thought to display practices ordered by final score (the higher the score, the more likely to find the practice in a high position); however the score is not shown.
 - Should we show the score?
 - Should the system automatically discard those practices ranking lower than a certain threshold?
 - Should the practices be explicitly classified and displayed into categories BEST/GOOD/CANDIDATE?

QUESTIONS FOR DEBATE (2)

- The workflow for content submission to the Digital Library includes a supervision role meant to discard inappropriate contents and to assign keywords matching the PKE taxonomy (A reviewer is responsible of this process).
 - Should the content for the Digital Library follow a peer-review assessment before publishing?
 - Should we have an editorial committee taken over this supervision?
- Reviewers and referees are intended to be a qualified subgroup of users of the PKE meant to assess new submitted practices and to act as consultants. We understand that those that have successfully submitted an outstanding practice should be entitled.
 - How should be the selection process to become *Reviewer or Referee*?

The Joint Action on Chronic Diseases and Promoting Healthy Ageing across the Life Cycle (JA-CHRODIS)*



Co-funded by
the Health Programme
of the European Union

* This presentation arises from the Joint Action addressing chronic diseases and healthy ageing across the life cycle (JA-CHRODIS), which has received funding from the European Union, under the framework of the Health Programme (2008-2013).