

Platform for knowledge exchange



Enrique Bernal-Delgado on behalf WP4
IACS-IIS Aragón

CHRODIS criteria for assessing practices

Platform development

EIP-AHA INTERACTION

CHRODIS criteria for assessing practices

Consensus process

- Experts recruitment
- Processing of materials (specific for each panel)
- Development of the online format of the questionnaire
- Launching first online questionnaire (Q1)
- Processing of results and building of second online questionnaire (Q2)
- Launching Q2
- Processing of results and building of materials for face-to-face meeting
- F2F meeting
- Final report on assessment criteria for “x” interventions

Experts recruitment

- Up to 20 – reputation draws legitimacy
- Expert profiles: **structural** representation of the **range of views** on the **key elements to assess a practice**
 - **Area of expertise:** clinical, epidemiology, social intervention, management, economics, policy;
 - **Type of stakeholder:** health professionals, patients, decision-makers and academics;
 - **Type of health system:** gate-keeping/free navigation, community anchored/individual patient anchored, in-patient oriented/outpatient and home care oriented, integrated with social care/ coordinated with social care, intensity of cost-sharing, etc.
- Country and gender balance

Expert panels' job

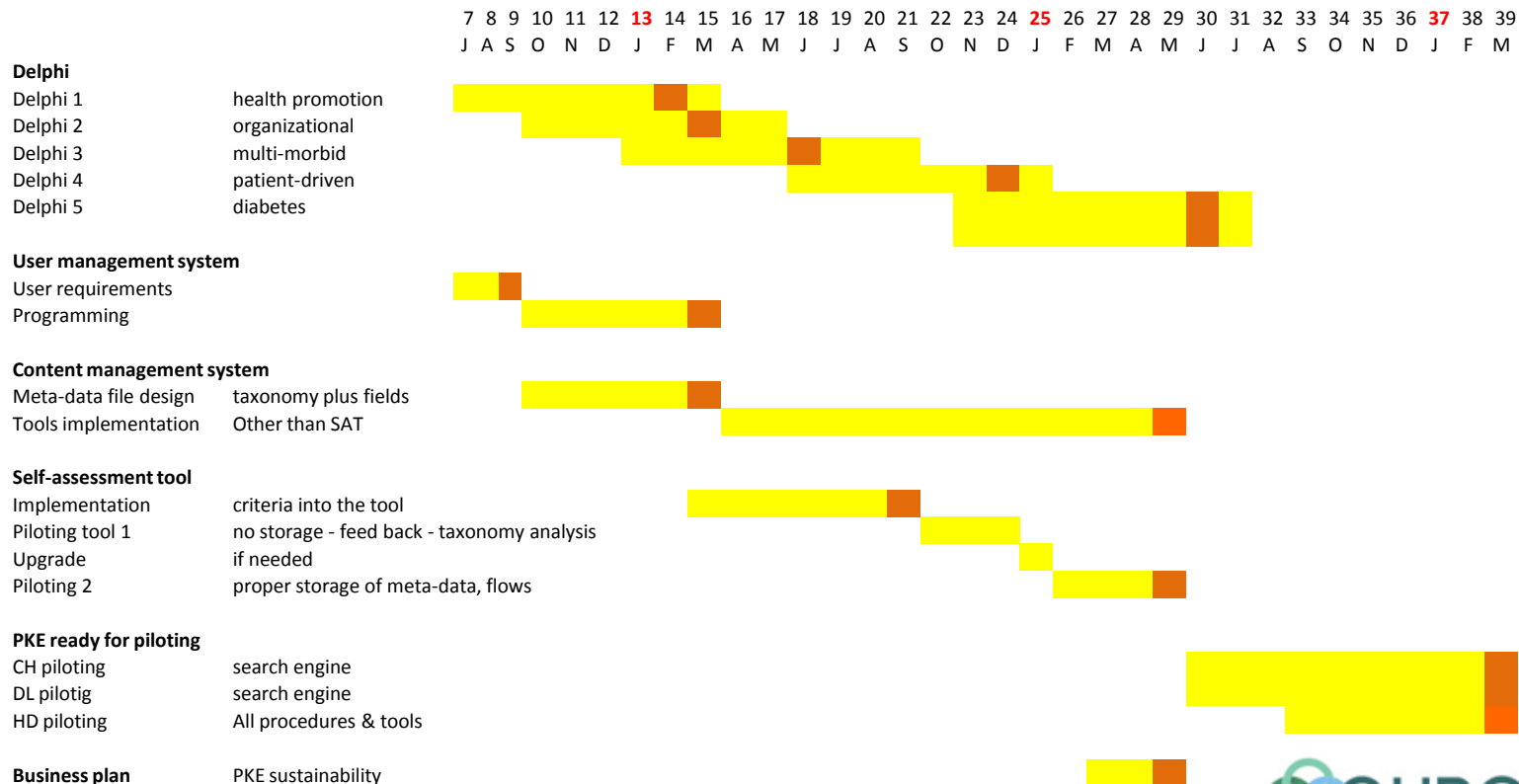
1. Agreeing on the list of relevant items for practice assessment
2. Setting the scale for valuation within each agreed item (establishing categories or levels “*the good, the better and the best*”)
3. Attaching a relative weight to each of those agreed items (how relevant each should be when assessing a practice)

Platform development

System components

- USER MANAGEMENT SYSTEM (UMS)
 - User management based on users' attributions and flows
 - Monitoring & reporting tools
- CONTENT MANAGEMENT SYSTEM (CMS)
 - Clearinghouse (CH)
 - Digital-resources library (DRL)
- HELP-DESK (HD)
 - Assessment tools (AT)
 - Fora and message board
 - Video-chat

Integrated timetable



The Joint Action on Chronic Diseases and promoting healthy ageing across the life cycle (CHRODIS-JA)*

*** THIS PRESENTATION ARISES FROM THE JOINT ACTION ON CHRONIC DISEASES AND PROMOTING HEALTHY AGEING ACROSS THE LIFE CYCLE (CHRODIS-JA) WHICH HAS RECEIVED FUNDING FROM THE EUROPEAN UNION, IN THE FRAMEWORK OF THE HEALTH PROGRAMME (2008-2013)**

