

PILOT IMPLEMENTATION OF IMCM IN PUBLIC AND PRIVATE HEALTHCARE SECTOR

Abstract

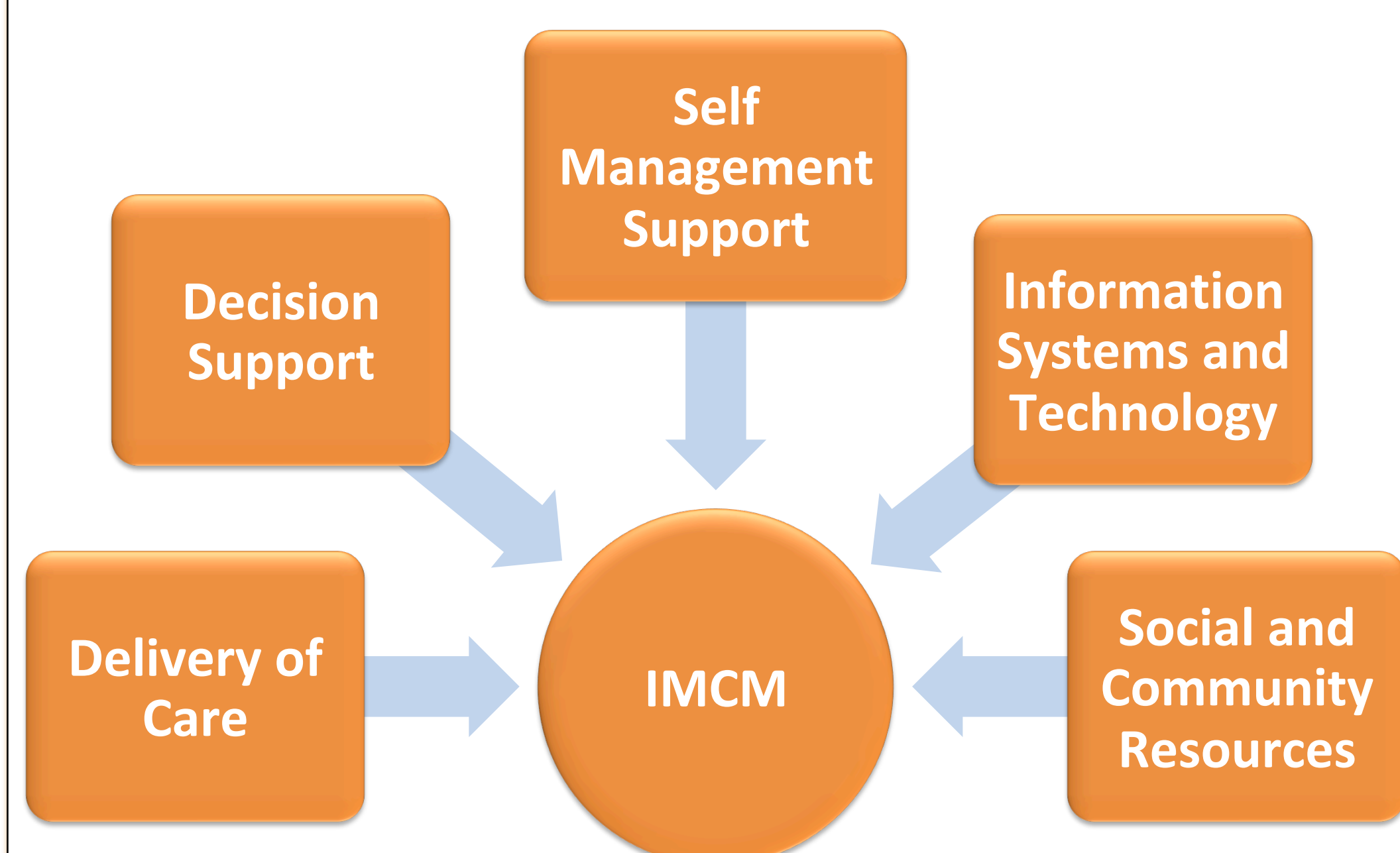
Vilnius University Hospital Santaros Klinikos (VULSK) is implementing the Integrated Multimorbidity Care Model (IMCM) components in primary care setting at VULSK and in private family clinic. IMCM model targets the heavy users of the healthcare system. By implementing IMCM we aim to improve the quality of life, patient satisfaction, decrease the number of potentially avoidable hospitalizations and optimize treatment. Implementation results may be relevant to national policy makers and could be referred to when reshaping the integration between social and health care. Economical evaluation of the costs, related to the intervention, could trigger further policy dialogue on additional funding for the new health services nationally.

WHAT?

The Joint Action CHRODIS developed a framework for care of patients with multimorbidity potentially applicable across Europe.

(Palmer et al. Health Policy 2018)

Sixteen components of the model are classified under five domains:

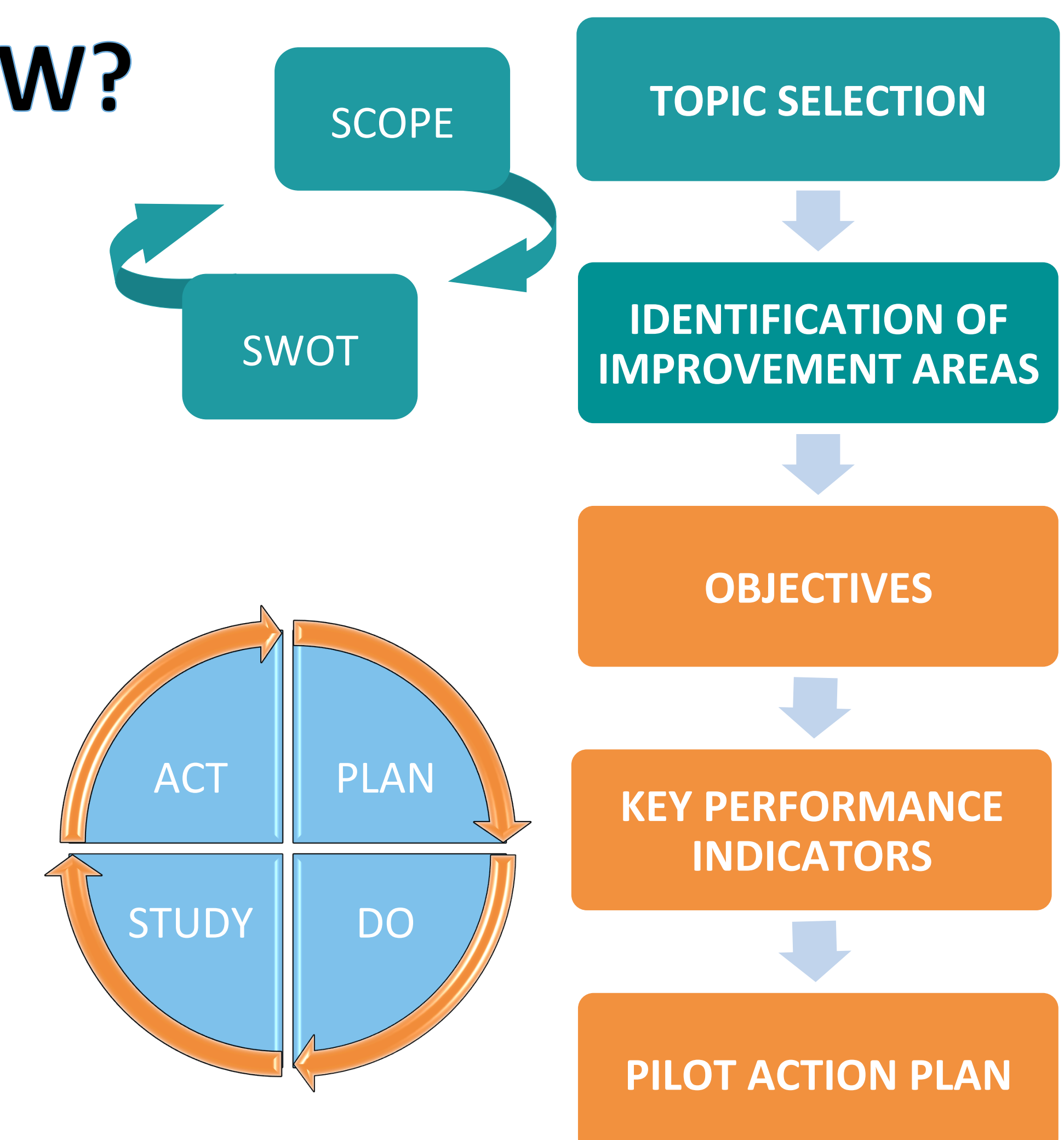


*General purpose of the interventions is to test the Integrated Multimorbidity Care Model in **Lithuania** and determine country specific model version, fully adapted and specified for further national or regional scale up.*

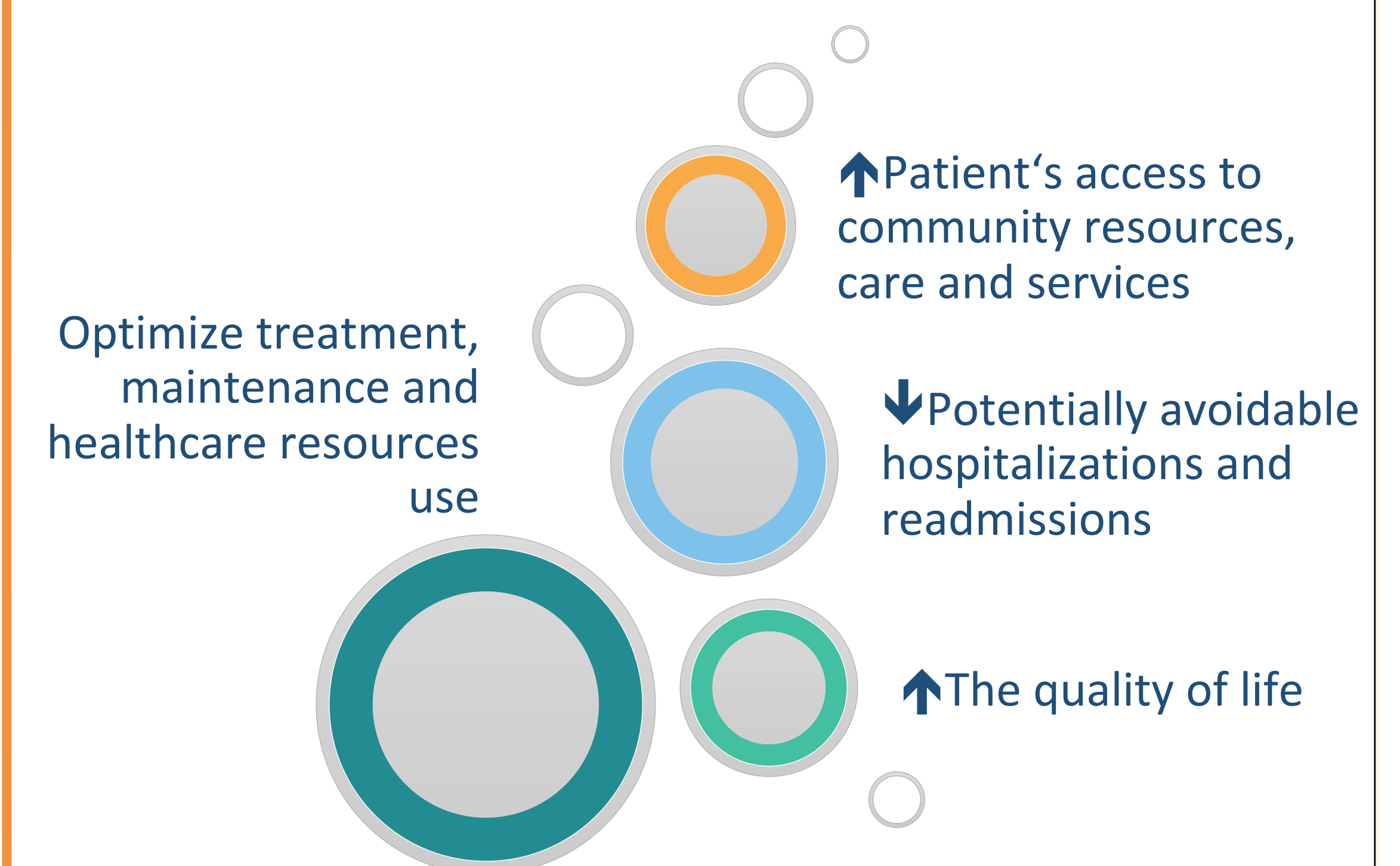
The Centre of Family Medicine provides assistance to 10000 citizens with more than 34 000 annual visits.



HOW?



WHY?



Acknowledgements

Vytautas Kasiulevičius (professor, researcher, family physician), Elena Jurevičienė (MD, Head of the Centre for Competencies and Biomedical Research, pulmonologist), Rokas Navickas (MD, PhD, cardiologist), Žydrūnė Visockienė (MD, PhD, endocrinologist), Kristina Šveikavičienė MD, Lina Vencevičienė, MD coordinator of the physicians at Family medicine centre of VULSK, Laimis Dambrauskas, Mpharm.