



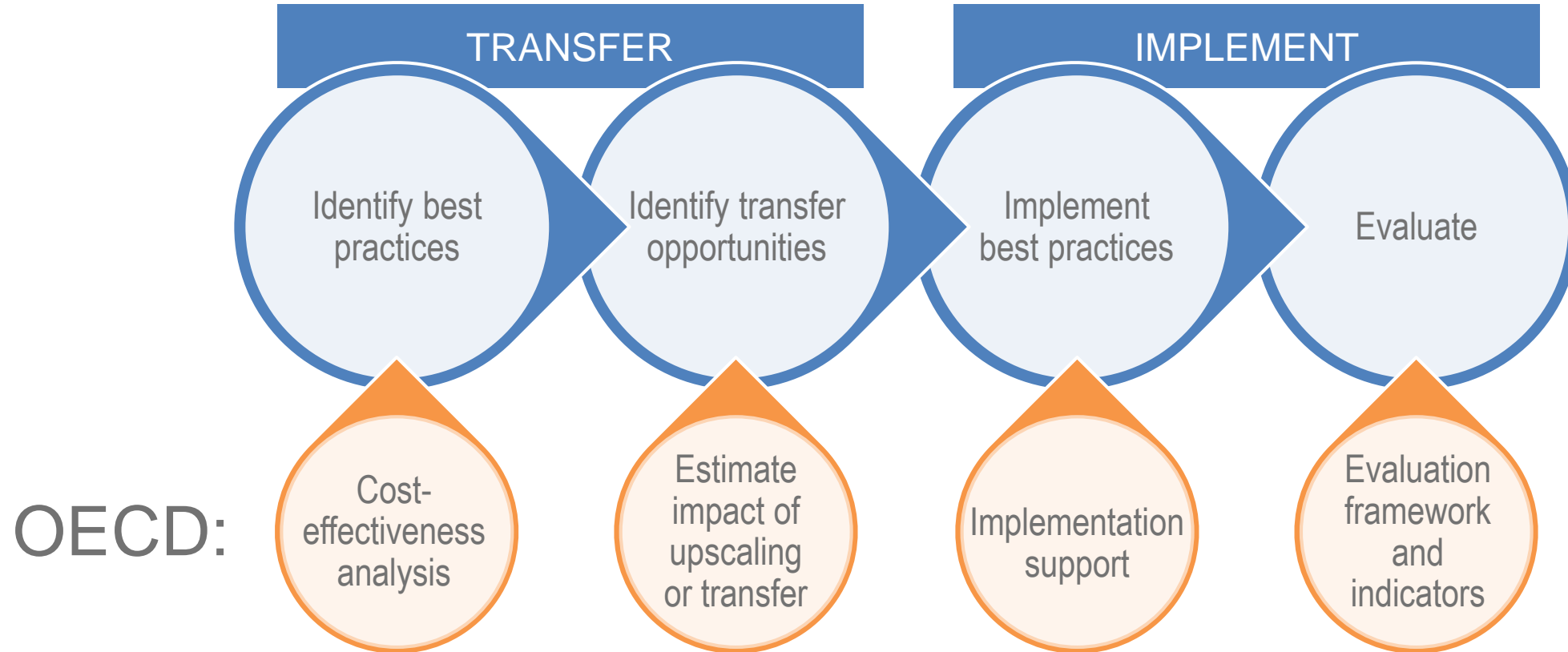
# OECD ACTION TO SUPPORT CHRODIS PLUS

Cost-effectiveness and assisting transferability of pilots

Sabine VUIK, OECD

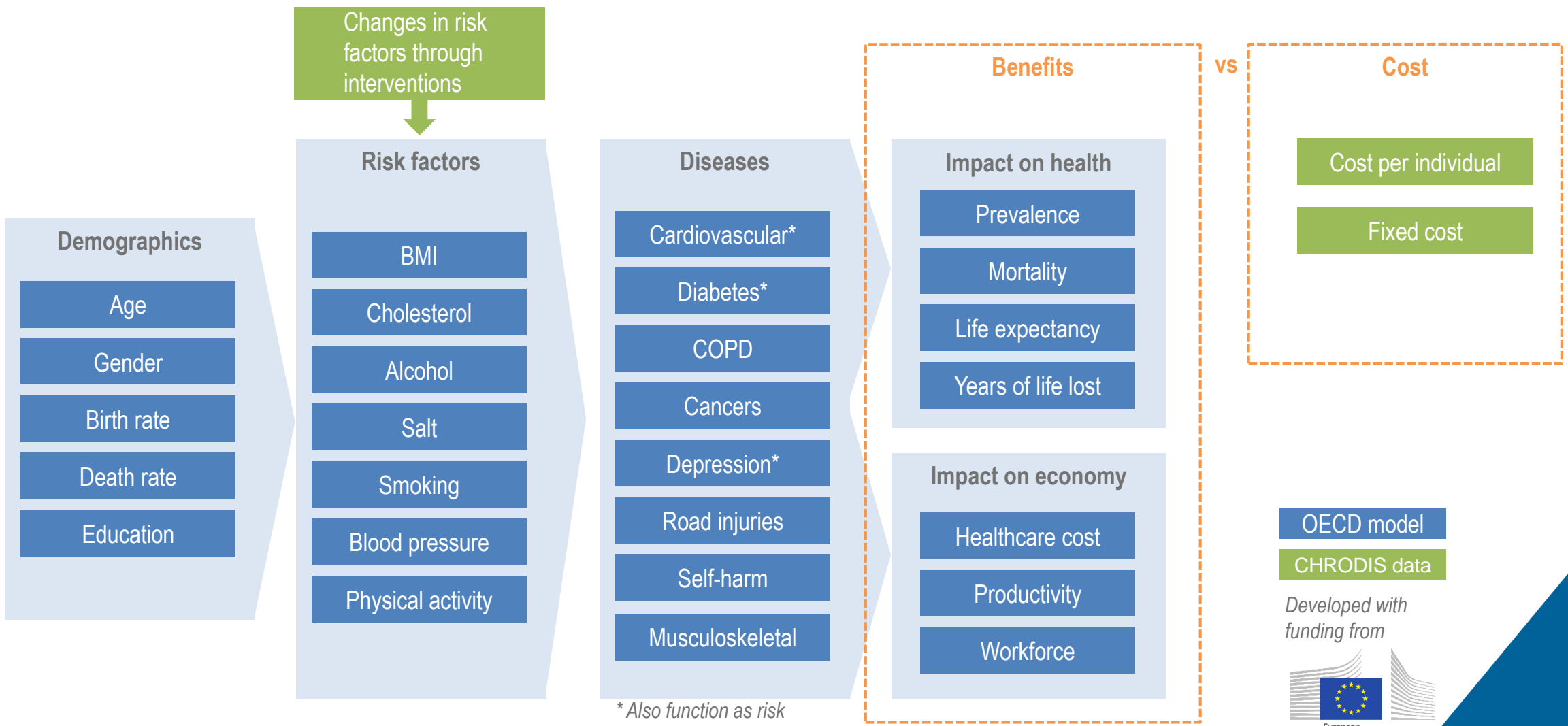


# OECD action to support CHRODIS PLUS





# The OECD SPHeP-NCD microsimulation model can be used for cost-effectiveness analysis



\* Also function as risk factors for other diseases

OECD model  
CHRODIS data

Developed with funding from



Identify  
transfer  
opportunities

# Using data from pilot sites, the impact of upscaling or transfer can be estimated



Definition of the eligible population

This can be national (upscaling),  
or in another country (transfer)



Uptake within the eligible population



Effectiveness of the interventions at the individual level



Timing of the maximum effectiveness

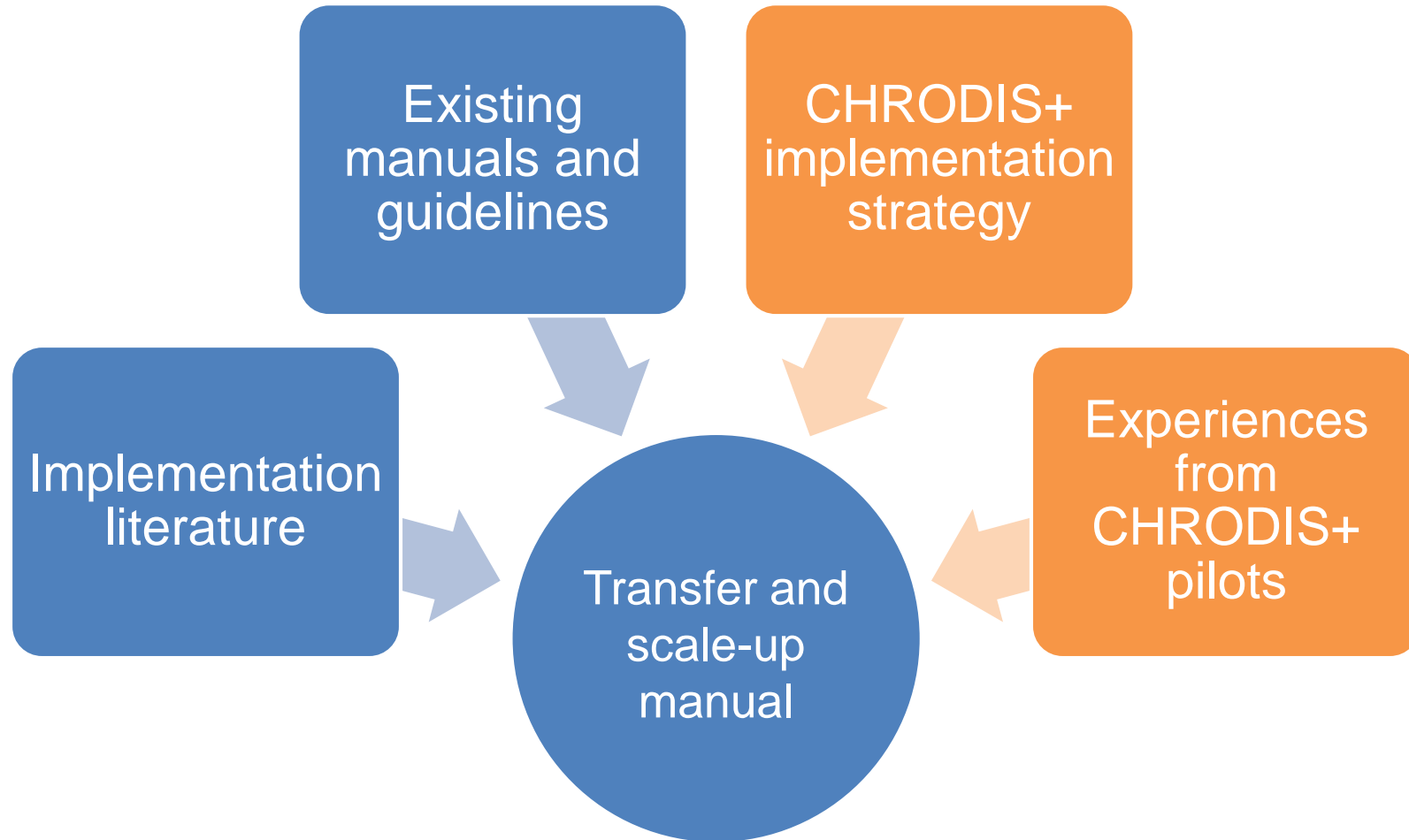


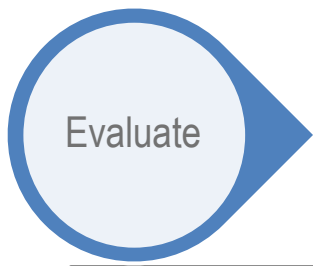
Intervention cost

Information learned  
from pilot sites

Implement  
best  
practices

# The OECD will create a manual on the transfer and scale-up of best practices





# The OECD can provide advice on designing and executing a project evaluation

---

## Planning the evaluation project

- Timing of data collection
- Method of data collection
- Study design (i.e. control group, baseline measurement)
- ...

## Type of data

- Surveys
- Physiological examination
- Medical records
- ...

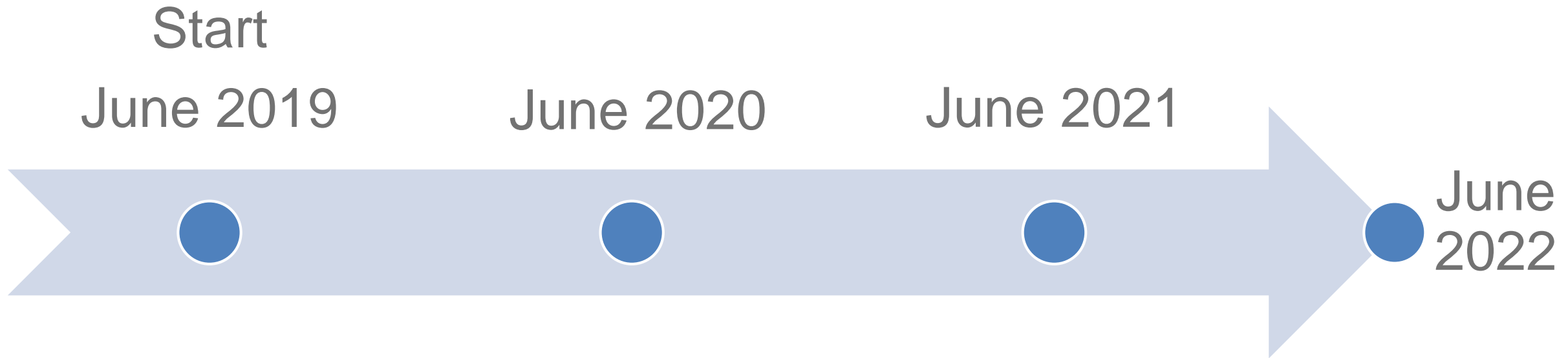
## Type of indicators

- Process metrics (e.g. participation, adherence)
- Lifestyle changes
- Physiological changes
- Long-term health impact
- Healthcare utilisation
- Mental health
- Participant experience
- Intervention cost
- ...



# Time line

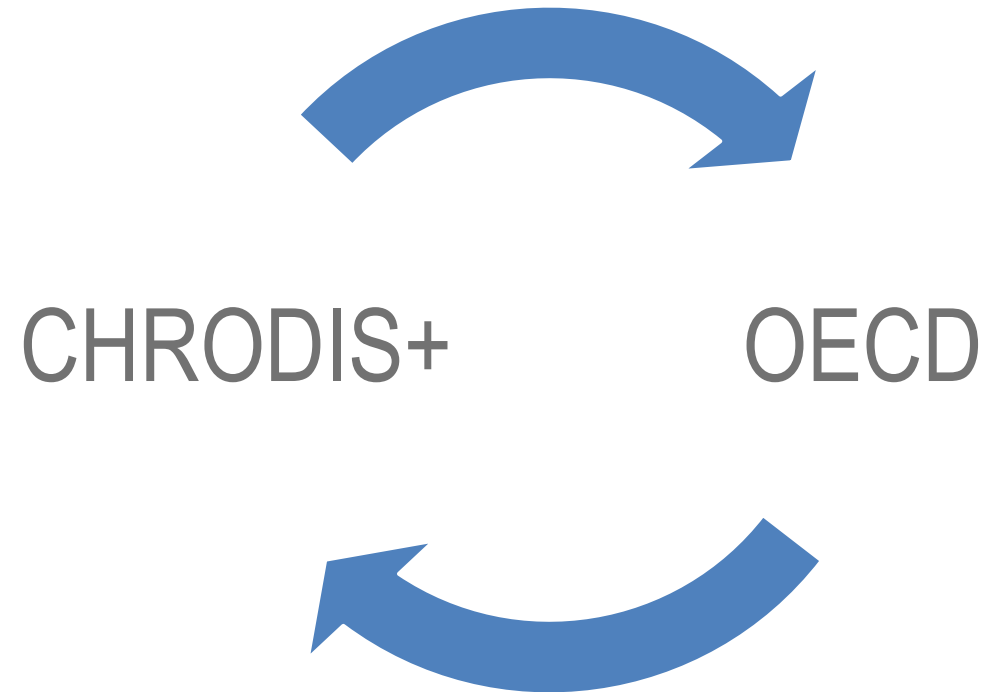
PRELIMINARY





Let us know what we can do for you – and you for us

---



[Sabine.vuik@oecd.org](mailto:Sabine.vuik@oecd.org)