

3<sup>rd</sup> WP7 meeting  
Istituto Superiore di Sanità, Roma  
July, 2-3, 2015

# Questionnaire on prevention and management of diabetes

## Overview of the results



**Lombardo Flavia**  
ISS- National Institute of Health,  
Italy

# Questionnaire on practices for prevention and management of diabetes

WP7

## **First phase**

provision of a structured overview about current programs (interventions, initiatives, approaches or equivalents)

## **Second phase** *(ongoing)*

analysis of programs/interventions/strategies/experiences reported by partners during the first phase (potential good practices)

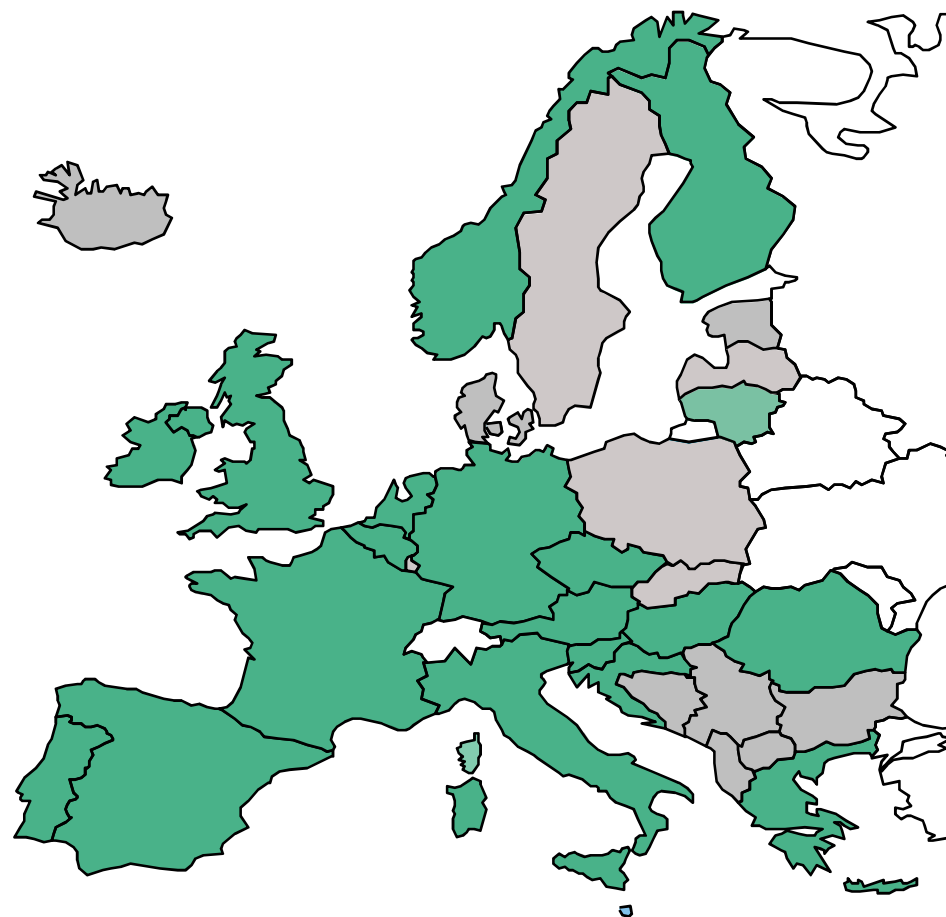
# Methods

- **Three sections**
  - A - Prevention of diabetes: focus on people at high risk;
  - B - Management of diabetes;
  - C - Education programs for persons with diabetes and training for professionals.
- **structured in 3 parts:**
  - 1-2: description of the main program at national, sub-national or local level
  - 3: short description of other (up to 3) plans/programs/interventions/strategies/experiences

# Methods- analysis of data

- Description of the answers: overview and by country
- Percentages: total of positive responses on the total of the countries that participate to the survey (blank answers were considered as “No”)
- List of all the reported plans/programs/interventions/experiences

# Countries involved



- Complete (19 Countries)
- No answers

# Questionnaire collected

**Period of data collection: December 2014 to April 2015**  
**N. of responders: 19 countries, 55 experts involved**

- Austria
- Belgium
- Finland
- France
- Germany
- Greece
- Ireland
- Italy
- Lithuania
- Norway
- Portugal
- Slovenia
- Spain
- United Kingdom
- Czech Republic
- Denmark
- Malta

WP7 partners

Other CHRODIS partners

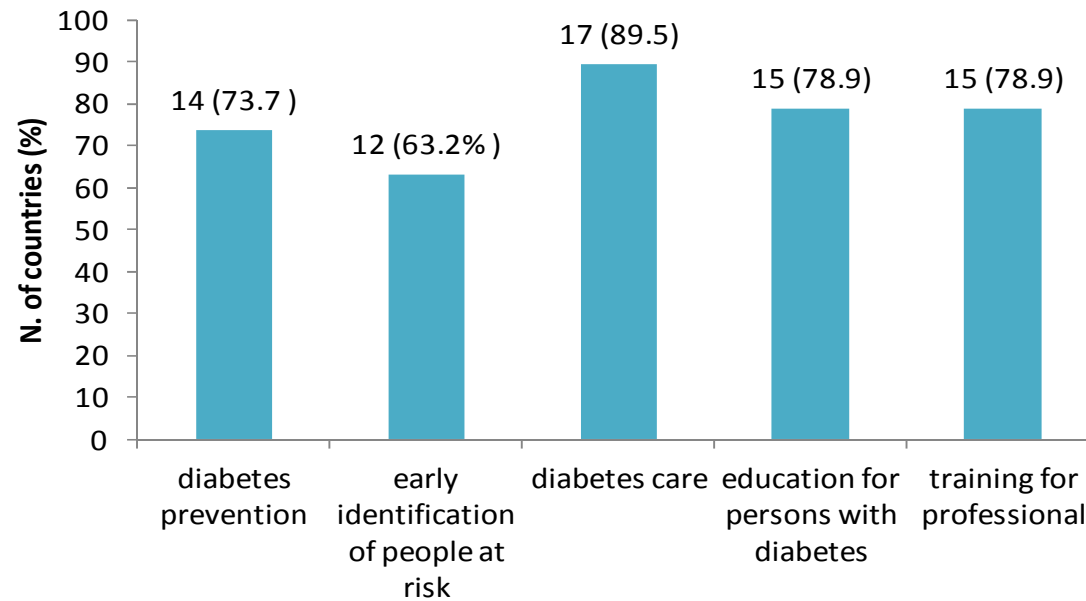
Other EU MSs

- Hungary
- Romania
- Latvia
- Luxemburg
- Poland
- Slovakia

- Croatia
- Cyprus
- Netherlands
- Bulgaria
- Estonia
- Iceland
- Sweden

[WWW.CHRODIS.EU](http://WWW.CHRODIS.EU)

# Results: Elements supported by national policies and legislations

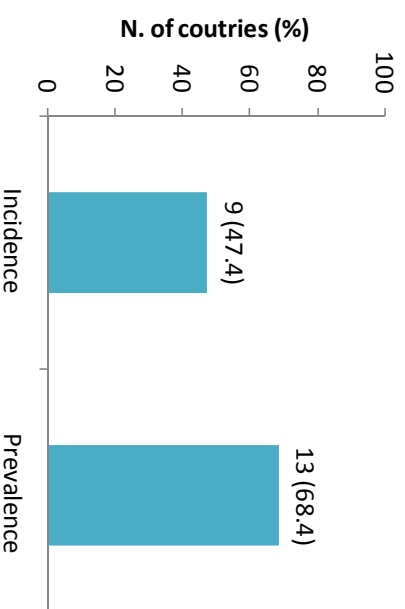


# Elements supported by national policies and legislations by country

	AUS	BE	CRO	CYP	FIN	FRA	GER	GRE	HUN	IRE	ITA	LIT	NET	NOR	POR	ROM	SLO	SPA	UK
<b>NDP</b>																			
<b>Diab.prev.</b>																			
<b>Early ident.</b>																			
<b>Diabetes care</b>																			
<b>Edu. for people</b>																			
<b>Training for prof.</b>																			



# Available data at national level

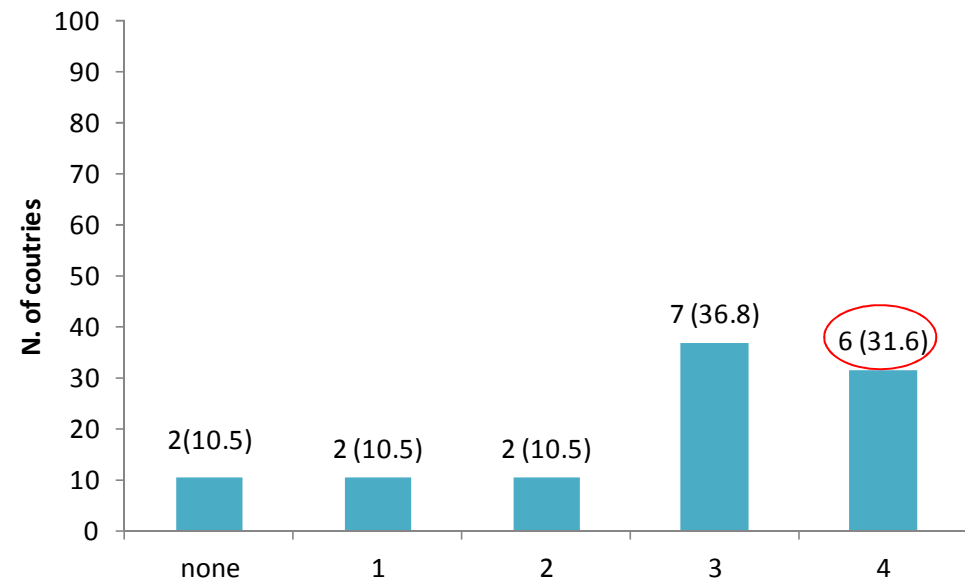


Country	Incidence	Prevalence
Austria		
Belgium		
Croatia		
Cyprus		
Finland		
France		
Germany		
Greece		
Hungary		
Ireland		
Italy		
Lithuania		
Netherlands		
Norway		
Portugal		
Romania		
Slovenia		
Spain		
UK		

# Diabetes prevention programs

## KEY ELEMENTS:

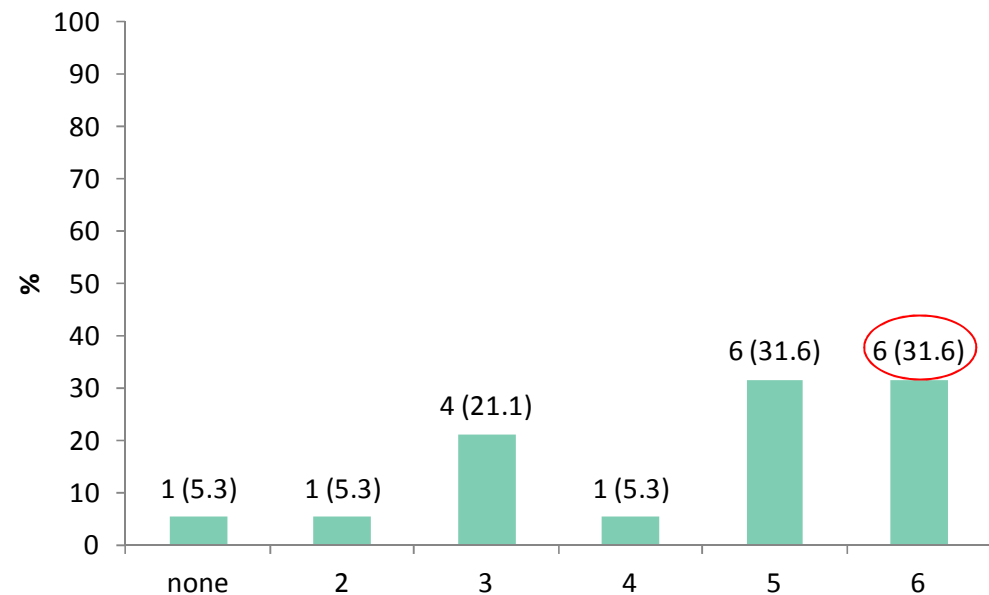
- National diabetes policies
- Screening protocol
- Defined care pathways
- Multidisciplinary approach



# Diabetes management programs

## KEY ELEMENTS:

- National DMP
- Vulnerable groups
- At least one of 4 key components\*
- Screening protocol/guidelines
- Available data on comorbidities/complications
- Defined care pathways



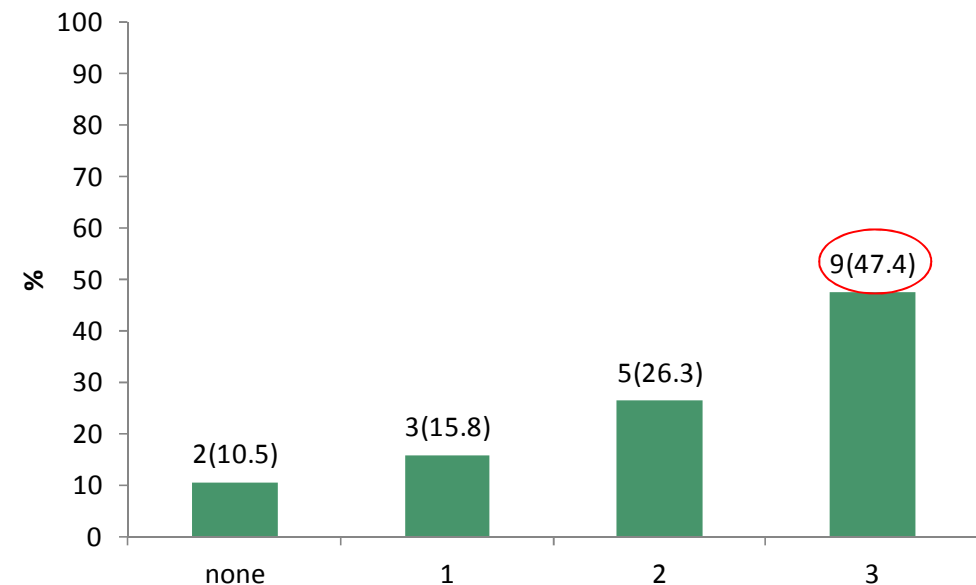
\*self-management support, delivery system design, decision support tool, clinical information system

[WWW.CHRODIS.EU](http://WWW.CHRODIS.EU)

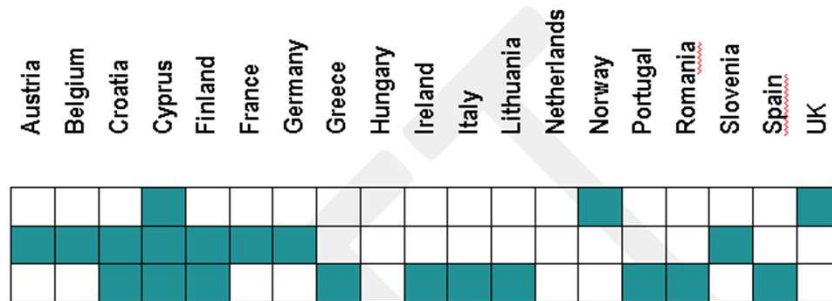
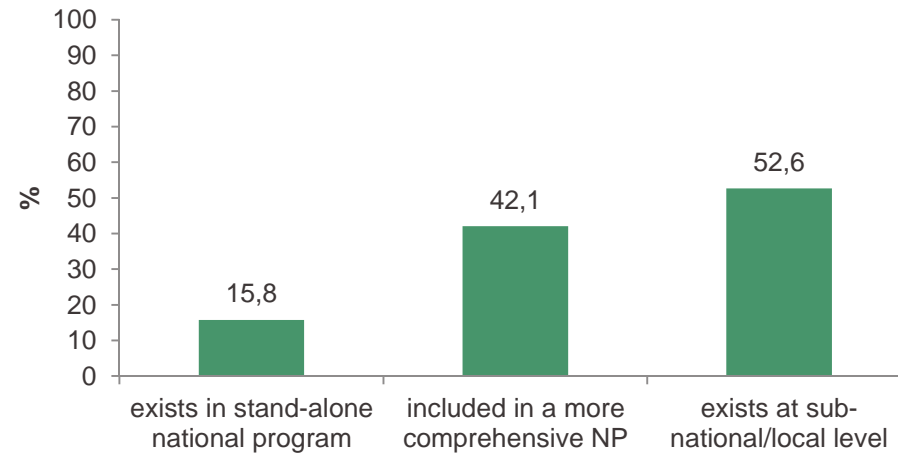
# Education programs for person with diabetes

## KEY ELEMENTS:

- National program covers education activities
- At least 3 defined criteria out of 11 defined (goals, rationale, target..)
- Specific indicators for monitoring



# Education programs



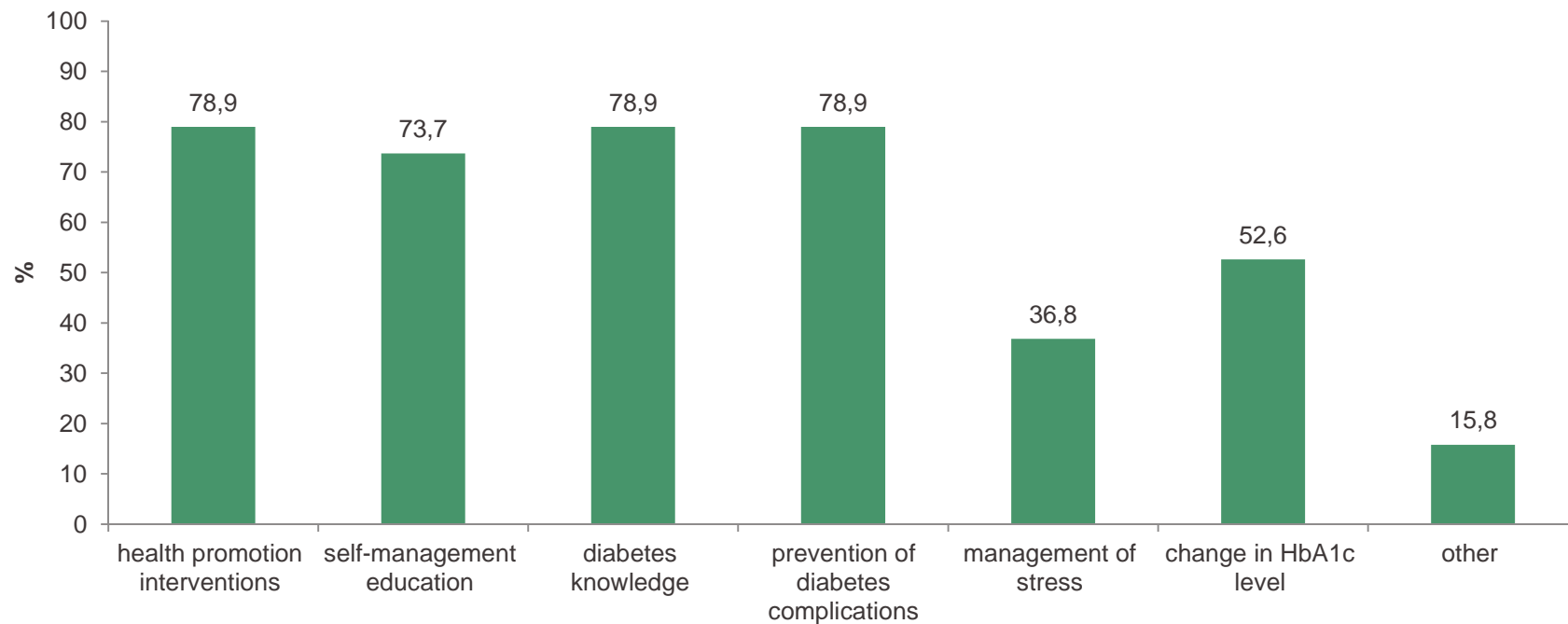
**1. A program that covers education activities:**

a.exists in a stand-alone national program

b.it's included in a more comprehensive national plan

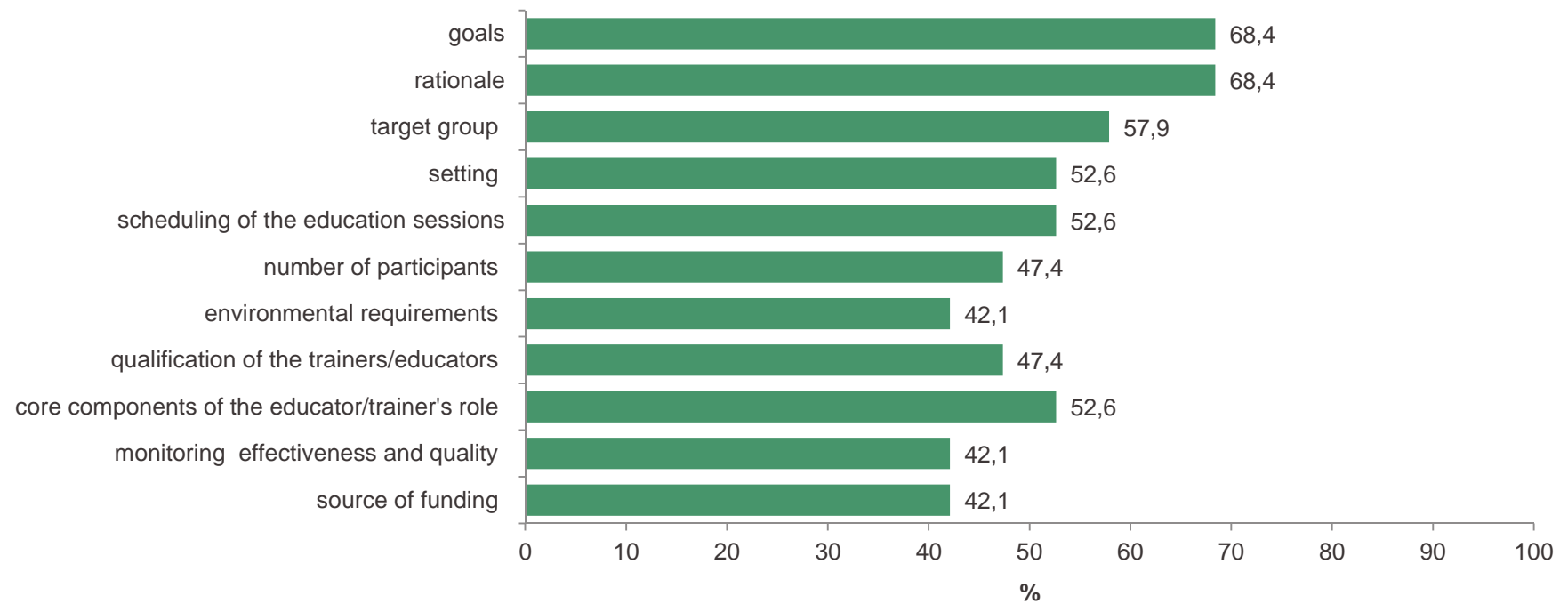
c.exists at sub-national/local government level

# Education programs: what is included in

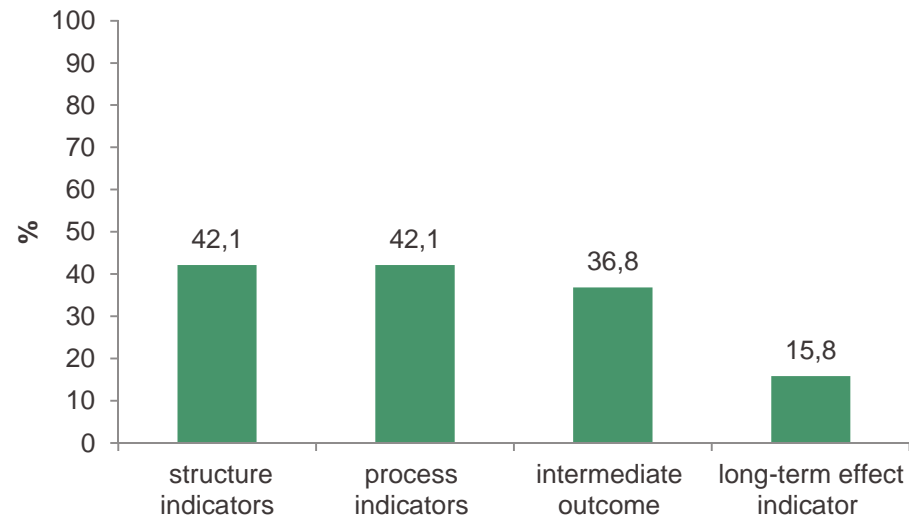


**Other:** special situations (pregnancy, illness, extensive physical activity) (ROM); improved self-efficacy and quality of life, ameliorated empowerment in people with diabetes (ITA); health literacy (FRA).

# Education programs: defined criteria

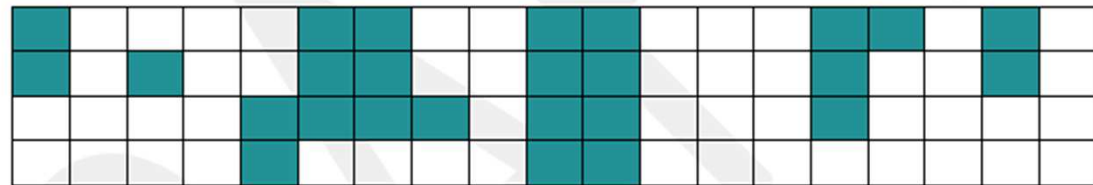


# Education programs: indicators for monitoring



## 15. The specific indicators used for monitoring:

- a. structure indicators
- b. process indicators
- c. intermediate outcome indicators
- d. long-term effect indicator

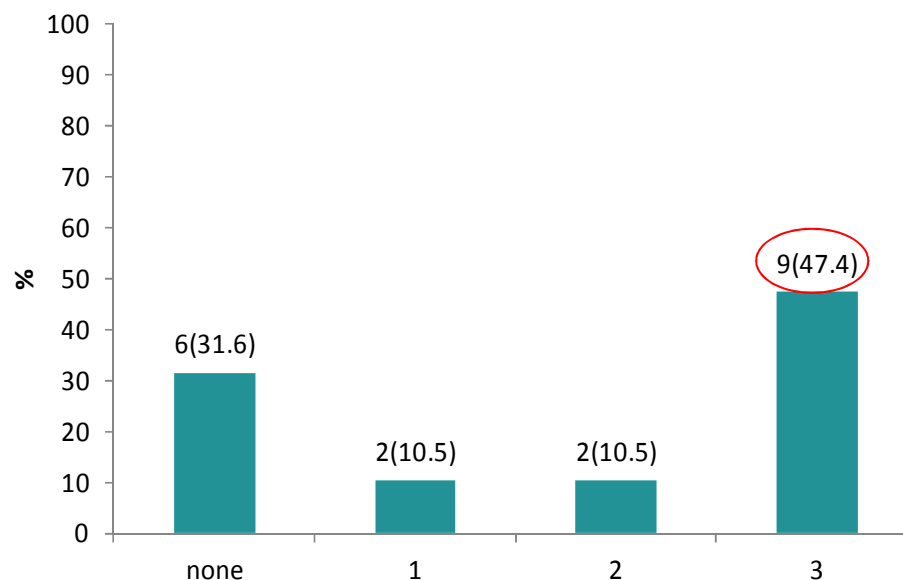




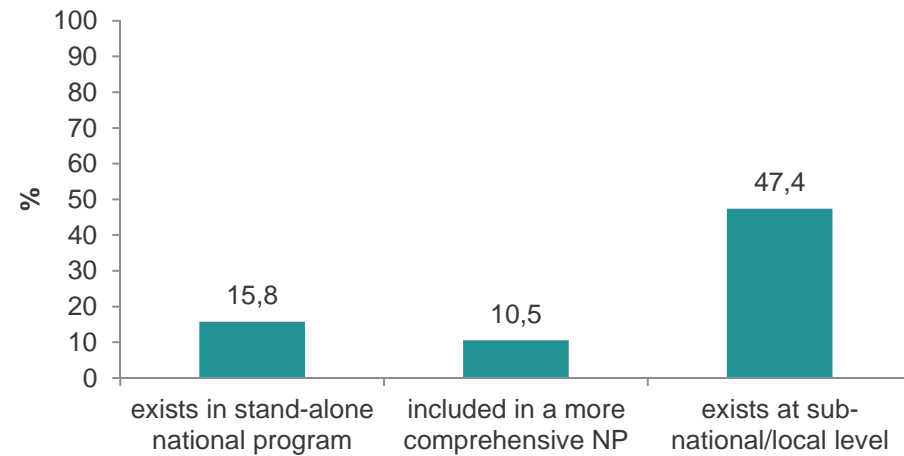
# Training programs for professional

## KEY ELEMENTS:

- National program covers health professional training
- At least 3 defined criteria out of 11 defined (goals, rationale, target..)
- Specific indicators for monitoring



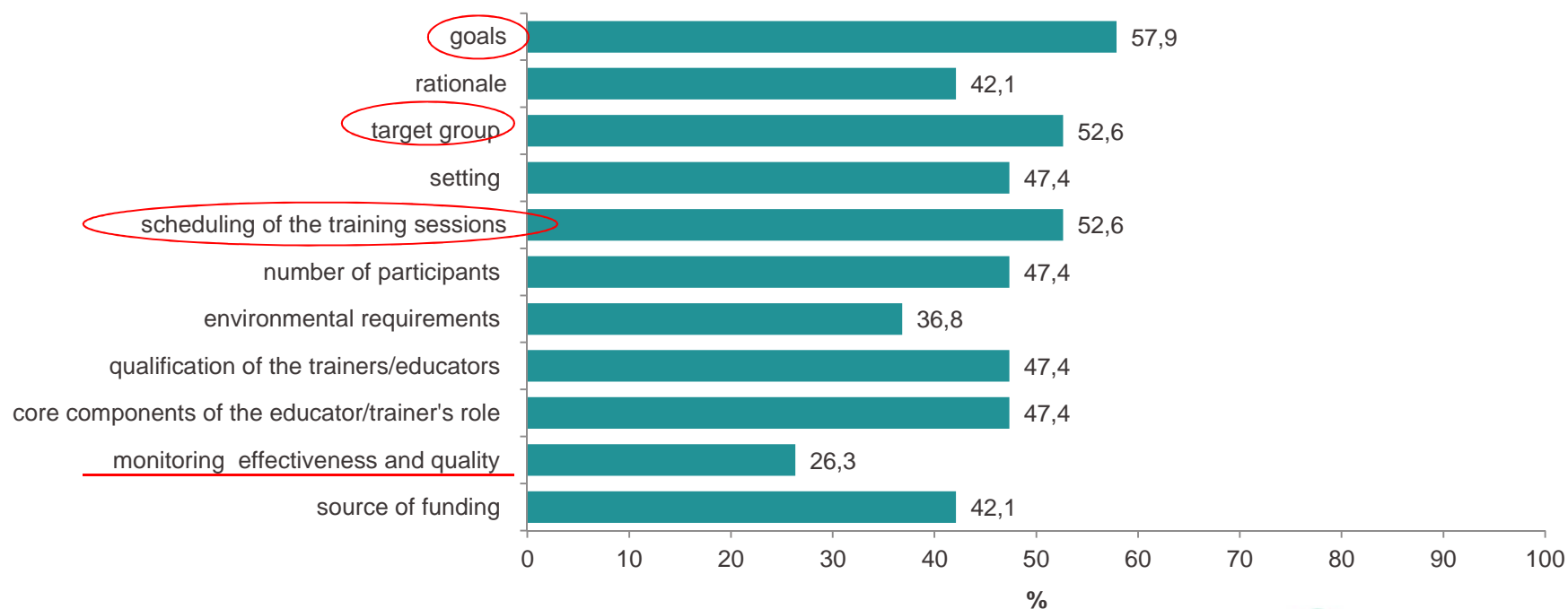
# Training programs



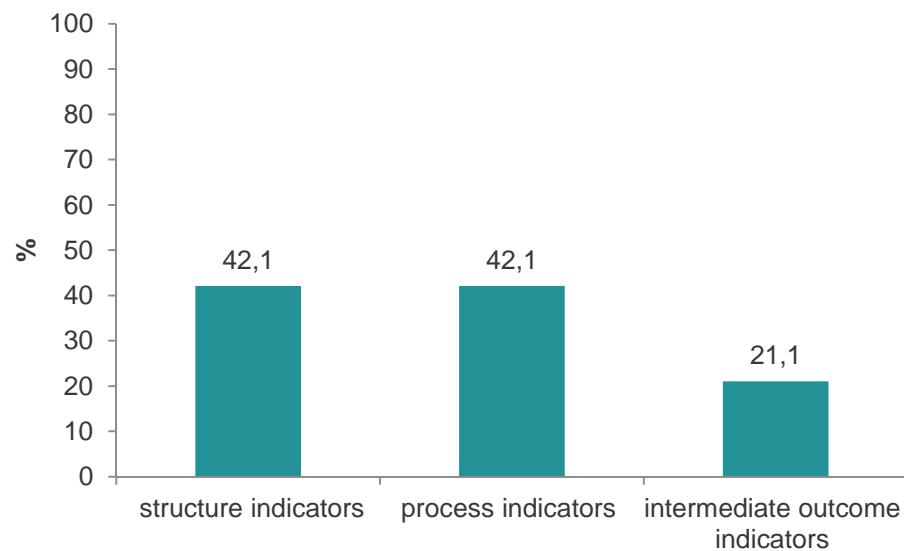
**17. A program that covers health professional training:**

- a. exists in a stand-alone national program
- b. it's included in a more comprehensive national plan
- c. exists at sub-national/local government level

# Training programs: defined criteria

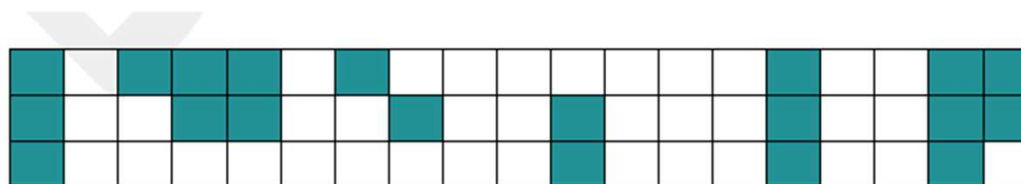


# Training programs: indicators for monitoring



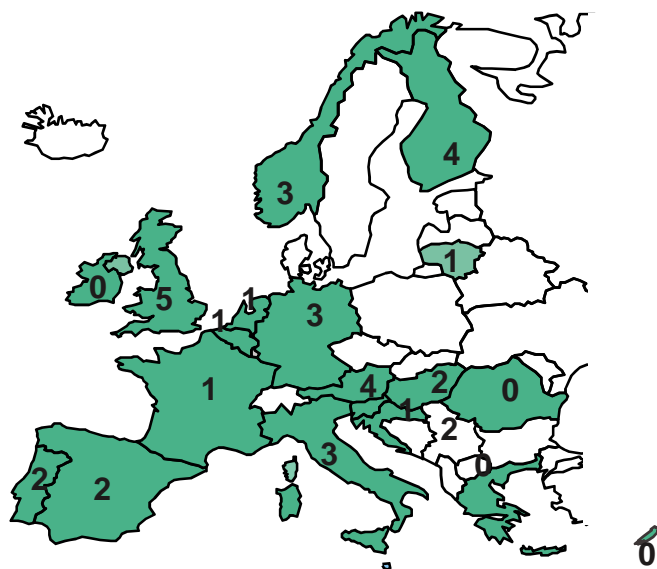
## 29. The specific indicators used for monitoring:

- a. structure indicators
- b. process indicators
- c. intermediate outcome indicators

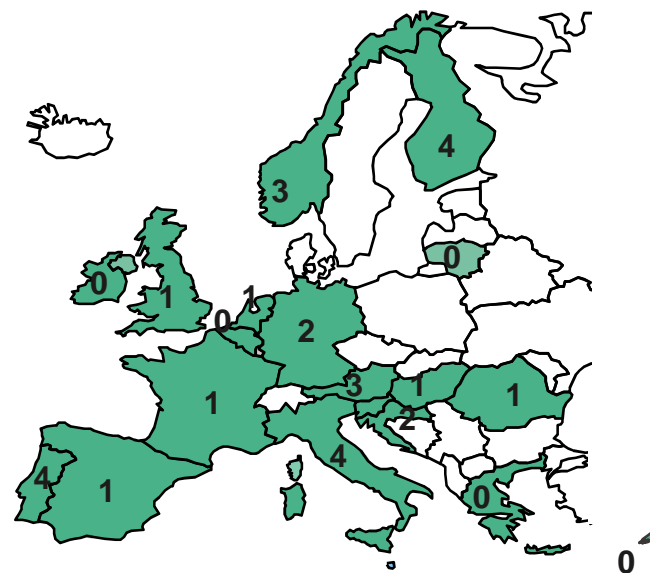


# Reported practices/programs

Programs on prevention of diabetes  
(n=35)



Programs on management of diabetes  
(n=28)



# Reported practices/programs

Programs on patient education  
(n=26)



Programs on training for professionals  
(n=29)



# The Joint Action on Chronic Diseases and Promoting Healthy Ageing across the Life Cycle (JA-CHRODIS)\*



Co-funded by  
the Health Programme  
of the European Union

\* This presentation arises from the Joint Action addressing chronic diseases and healthy ageing across the life cycle (JA-CHRODIS), which has received funding from the European Union, under the framework of the Health Programme (2008-2013).