

Open Strategic Decision

Workpackage alignment



Teresa Chavarria
National Institute of Health Carlos III

Calendar of relevant JA-CHRODIS meetings/events

	Jul	Aug	Sept	Oct	Nov	Dec
JA-CHRODIS				X	27 th Multimorbidity Conference High level meeting Parliamentarians	
WP2				X	14 th -17 th EUPHA Conference	
WP3		Iberian Congress		X		
WP4				X	28 th Expert Panel meeting	
WP5		EUPHA Congress		X	X	23-24 th Health Promotion Conference. ¿GB Meeting?
WP6				X	Clinical Expert meeting	
WP7				X	20 th -21 st Workshop on Dissemination to Policy Makers ¿Advisory Board Meeting?	

The Joint Action on Chronic Diseases and Promoting Healthy Ageing across the Life Cycle (JA-CHRODIS)*



Co-funded by
the Health Programme
of the European Union

* This presentation arises from the Joint Action addressing chronic diseases and healthy ageing across the life cycle (JA-CHRODIS), which has received funding from the European Union, under the framework of the Health Programme (2008-2013).

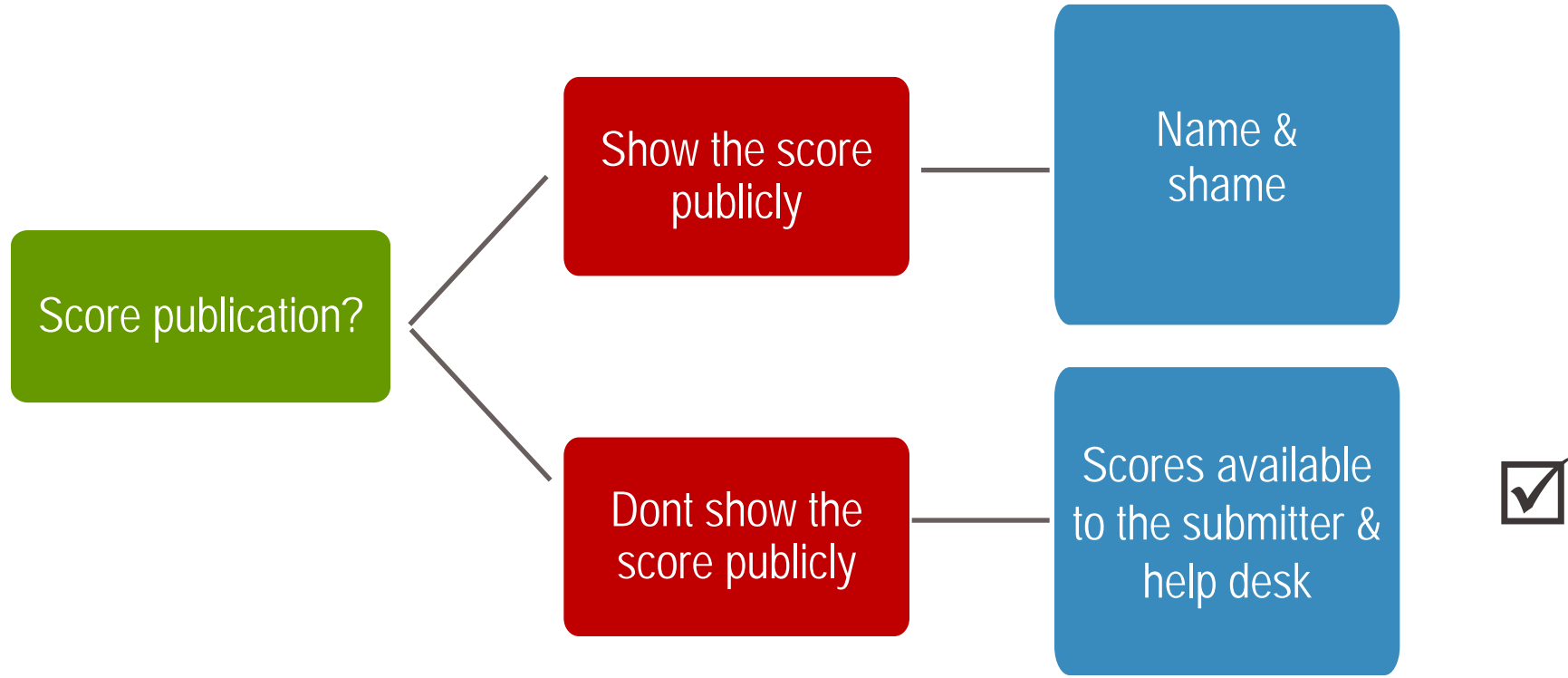
Open Strategic Decision

Open Questions PKE

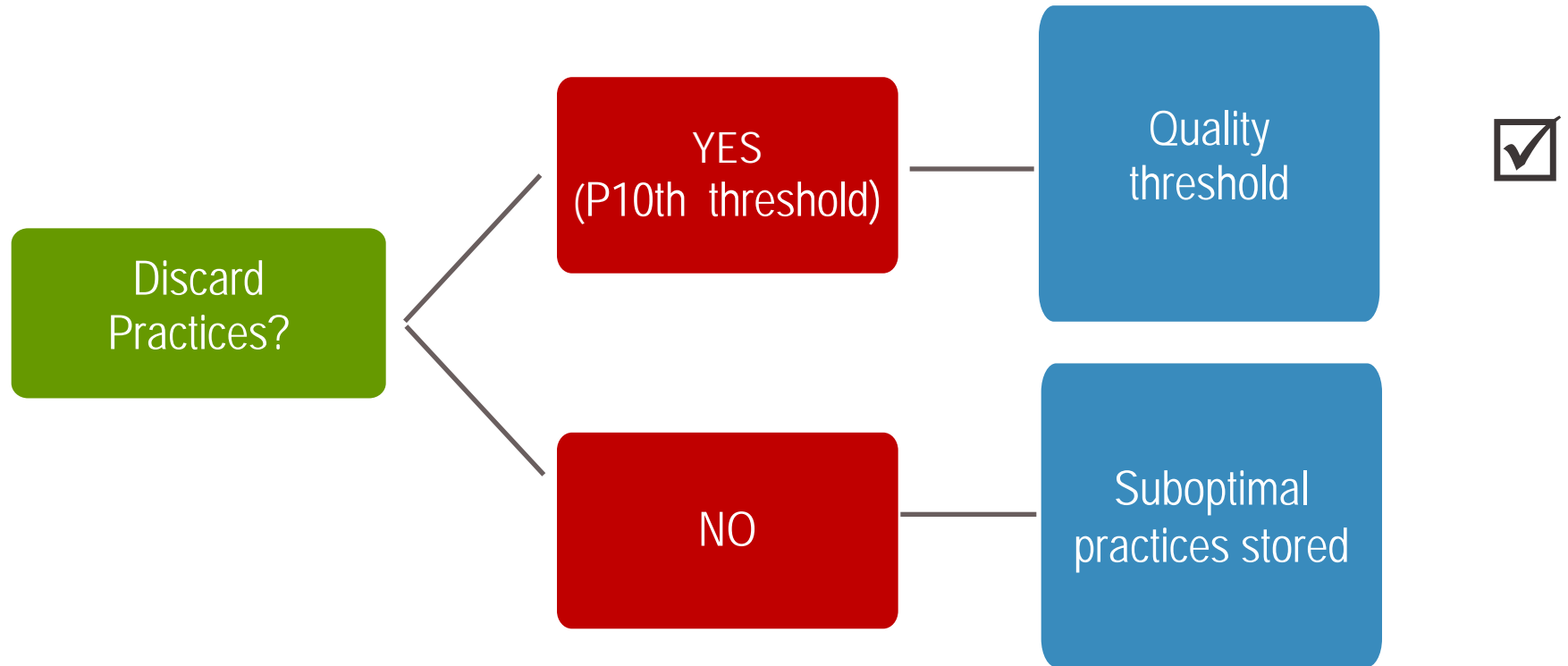


Enrique Bernal Delgado
IACS

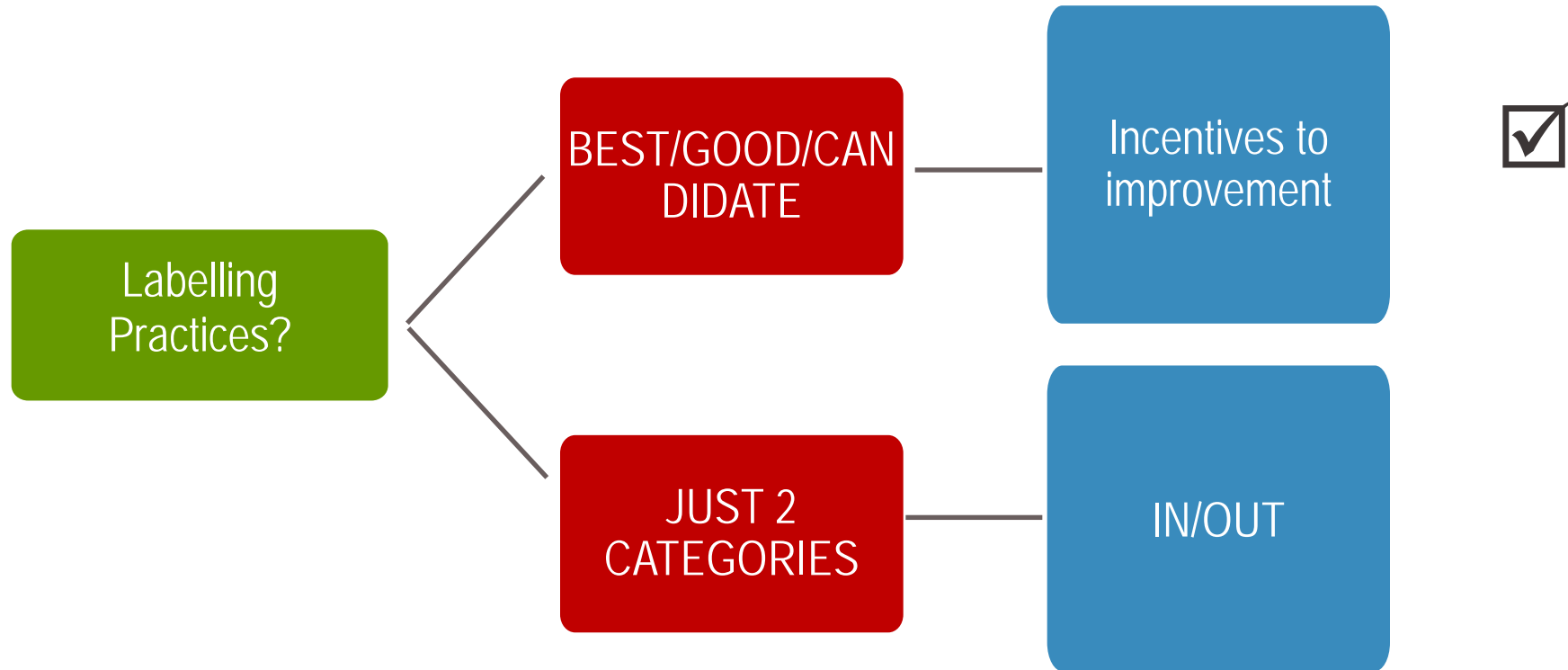
Key decisions and their implications (1)



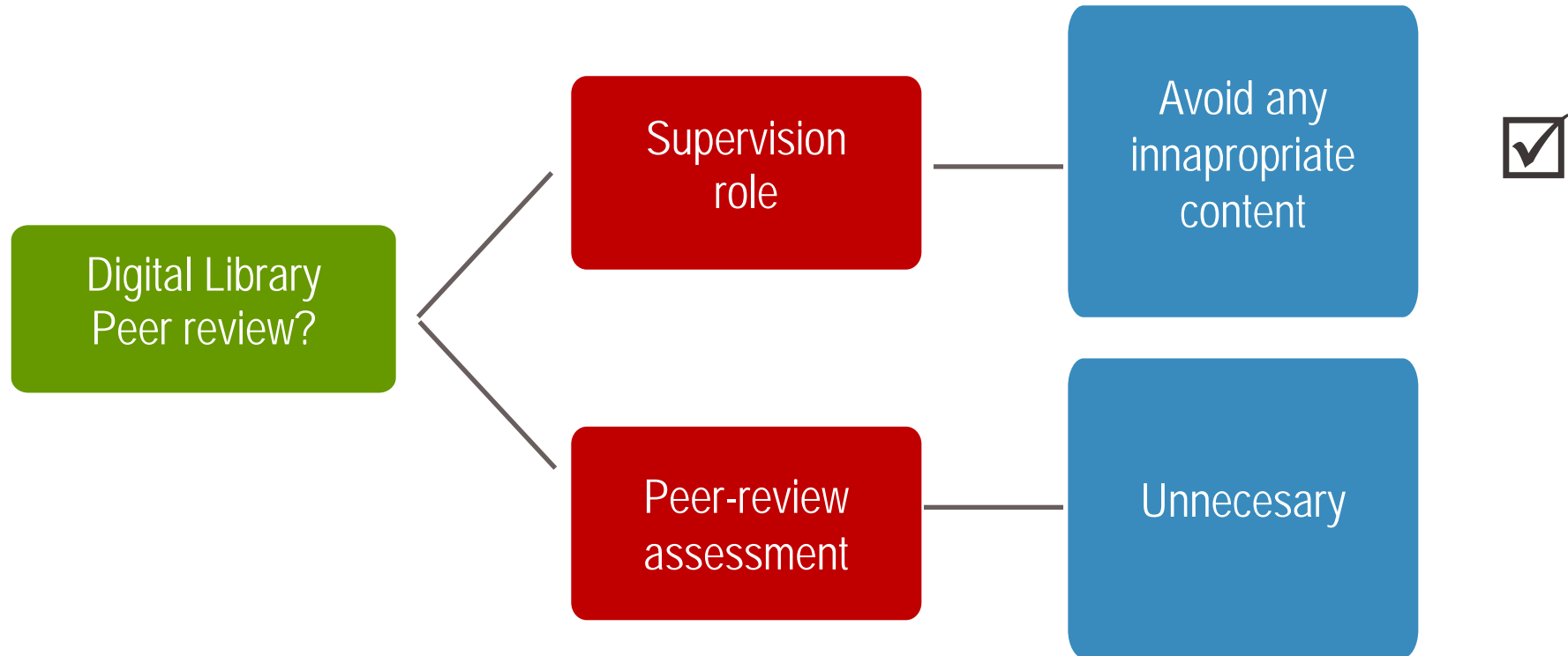
Key decisions and their implications (2)



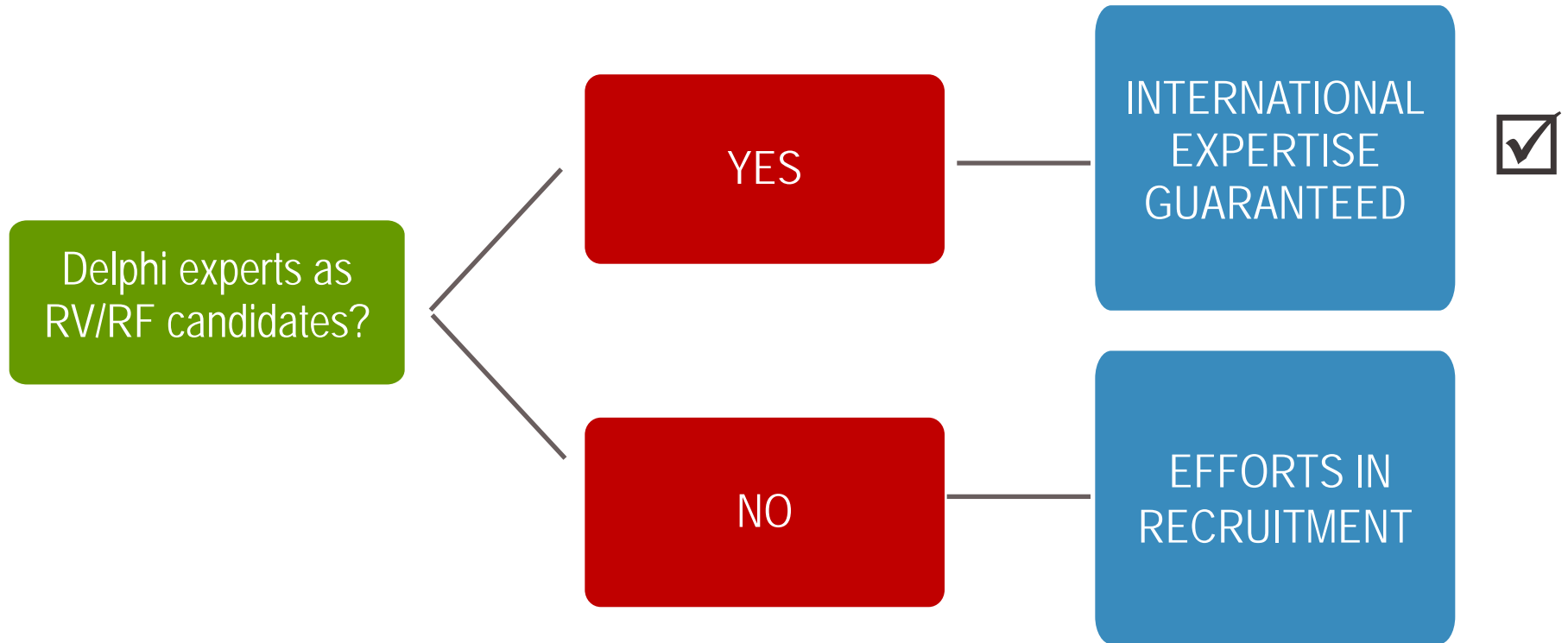
Key decisions and their implications (3)



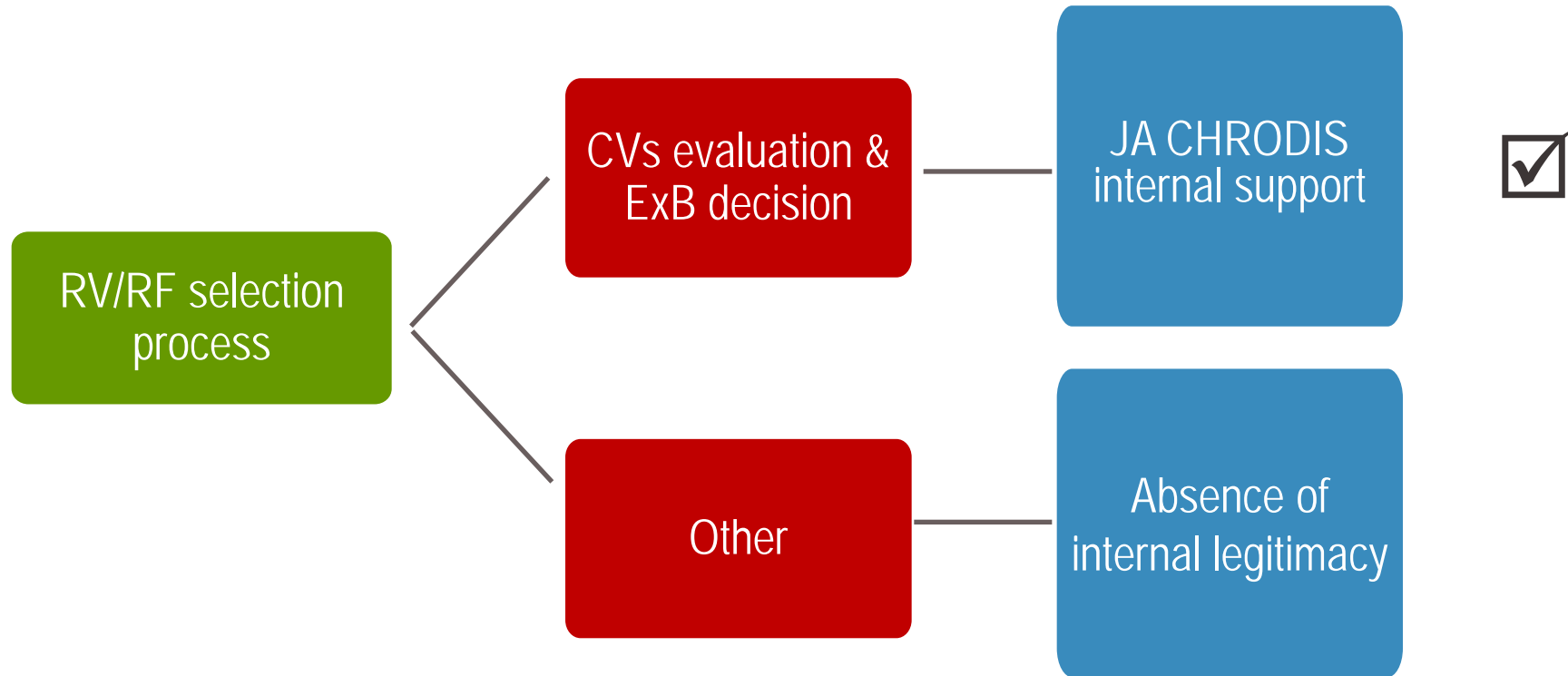
Key decisions and their implications (4)



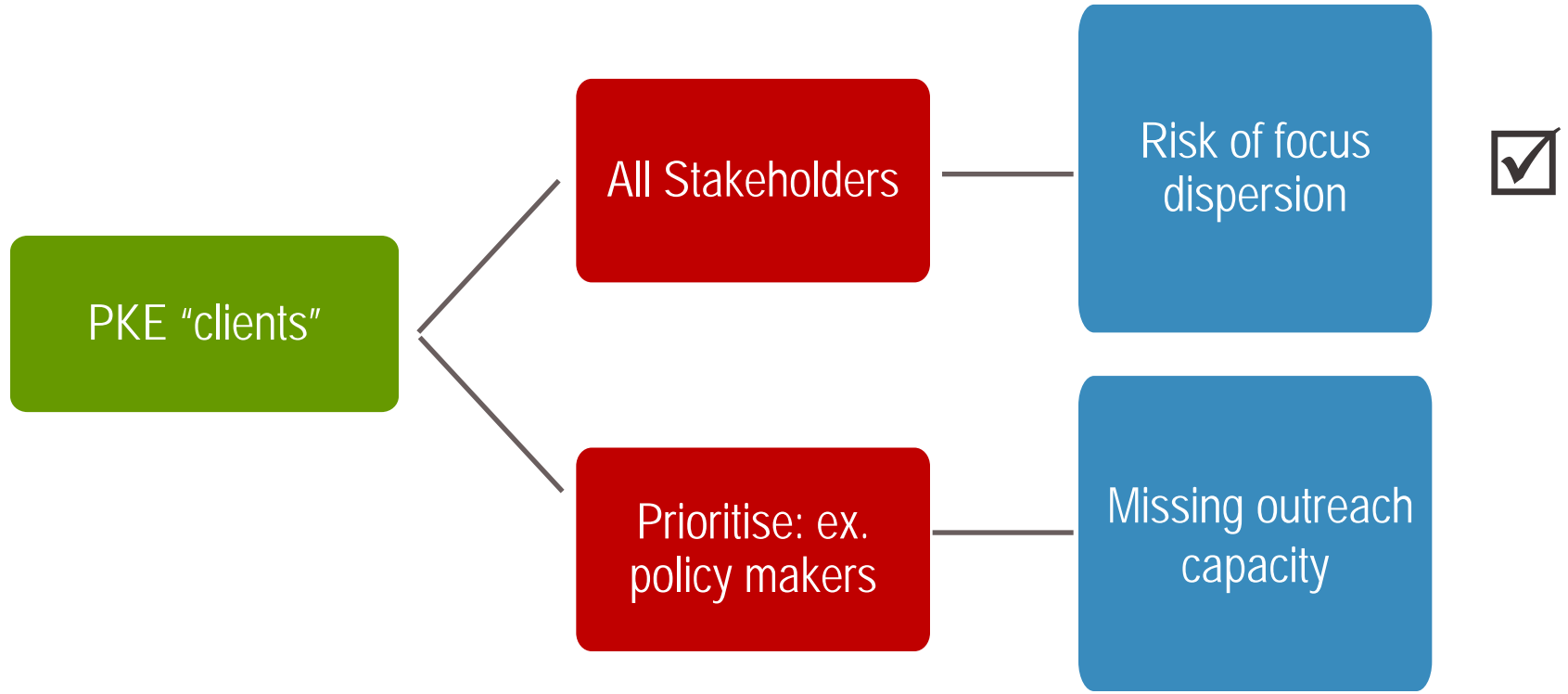
Key decisions and their implications (5)



Key decisions and their implications (6)



Key decisions and their implications (7)



The Joint Action on Chronic Diseases and Promoting Healthy Ageing across the Life Cycle (JA-CHRODIS)*



Co-funded by
the Health Programme
of the European Union

* This presentation arises from the Joint Action addressing chronic diseases and healthy ageing across the life cycle (JA-CHRODIS), which has received funding from the European Union, under the framework of the Health Programme (2008-2013).

Open Strategic Decision

Definition of Good Practice

Do we need it?



Marina Maggini
ISS – National Institute of Health, Italy

CHRODIS at a glance

Good practices

- A good practice is one that is worth disseminating because it is **based on best available evidences**, is associated with good outcomes and may inspire practices in different contexts.



**based on best
available evidences**

In the context of JA-CHRODIS, actions may mean policies, programmes, and clinical or public health interventions. The specific features to define a practice as a good practice will be elaborated in WP4 in collaboration with WP5, 6, and 7. There may be general (non-disease specific) characteristics and disease specific characteristics of a good practice.

CHRODIS Glossary *(not approved)*

Good practices

A good practice would ideally refer to a practice able to improve **quality of life efficiently** (particularly from a societal perspective) while preserving the values of the patient and the society where the practice is implemented.

The difficulty is on objectively measuring those elements.

- CHRODIS opts for a definition of good practice built upon the use of a set of criteria previously agreed in a consensus process with experts on chronic care. Consensus becomes a surrogate when making positive statement is difficult, and normative (subjective) arguments might take place.

CHRODIS Glossary *(not approved)*

Best practices

These are interventions, programs/services, strategies of policies which have demonstrated desired changes through the use of appropriate well documented research and evaluation methodologies. They have demonstrated through **multiple implementations**, the ability to be replicated and the potential to be adapted and transferred.

A best practice is one that is most suitable given the available situation and context.



multiple implementations

From Canadian Best Practice Portal

Best practice

“Best practices in health promotion/public health are those sets of processes and activities that are consistent with health promotion/public health values, goals and ethics, theories and beliefs, evidence, and understanding of the environment, and that are most likely to achieve health promotion/public health goals in a given situation”

Kahan and Goodstad (IDM- Interative Domain Model, University of Toronto)

FAO - Capacity Development Portal

Fostering knowledge sharing and learning

Here is a definition of good practice that is simple and to the point.

- **A good practice is simply a process or a methodology that represents the most effective way of achieving a specific objective.**
- ... approaches are constantly evolving and being updated
- so another way of defining a good practice is one that has been proven to work well and produce good results, and is therefore recommended as a model. ...
- The essence of identifying and sharing good practices is to learn from others and to re-use knowledge. The biggest benefit consists in well developed processes based on accumulated experience.

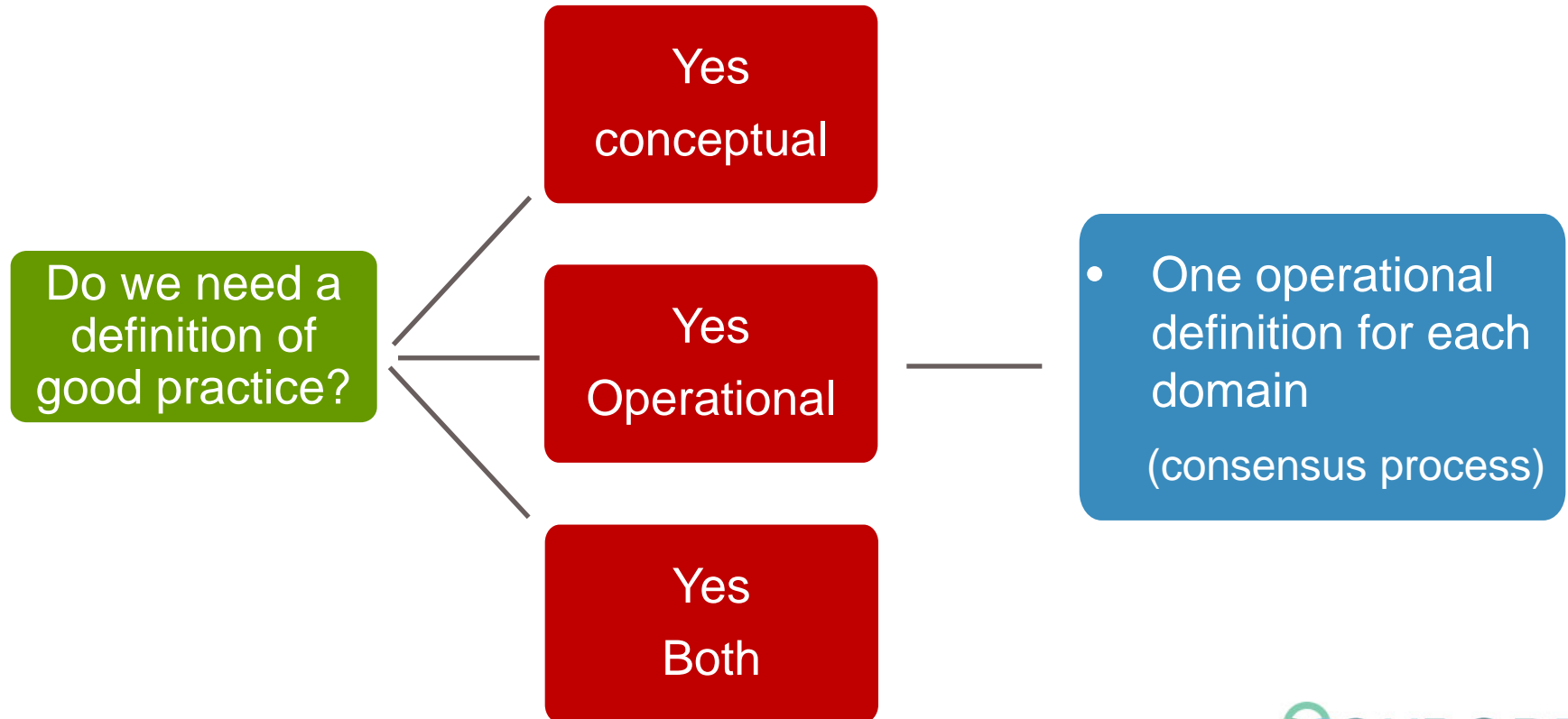
FAO - Good practice cycle

<http://www.fao.org/capacitydevelopment/goodpractices/gp-definitionsandcriteria/gp-definitions/en/>



This is not a linear process, but an iterative and participatory one

Key decisions and their implications



Definitions

A good practice is one that is worth disseminating because it is **based on best available evidences**, is associated with good outcomes and may inspire practices in different contexts.

These are interventions, programs/services, strategies of policies which have demonstrated desired changes through the use of appropriate well documented research and evaluation methodologies. They have demonstrated through **multiple implementations**, the ability to be replicated and the potential to be adapted and transferred.

Best practices in health promotion/public health are those sets of processes and activities that are consistent with health promotion/public health values, goals and ethics, theories and beliefs, evidence, and understanding of the environment, and that are most likely to achieve health promotion/public health goals in a given situation”

A good practice is simply a process or a methodology that represents the most effective way of achieving a specific objective.

The Joint Action on Chronic Diseases and Promoting Healthy Ageing across the Life Cycle (JA-CHRODIS)*



Co-funded by
the Health Programme
of the European Union

* This presentation arises from the Joint Action addressing chronic diseases and healthy ageing across the life cycle (JA-CHRODIS), which has received funding from the European Union, under the framework of the Health Programme (2008-2013).

Open Strategic Decision

SIII.4. Process of Practice Exchange and Transfer



Presenter: Teresa Chavarría
Guided Discussion Jelka Zlatel

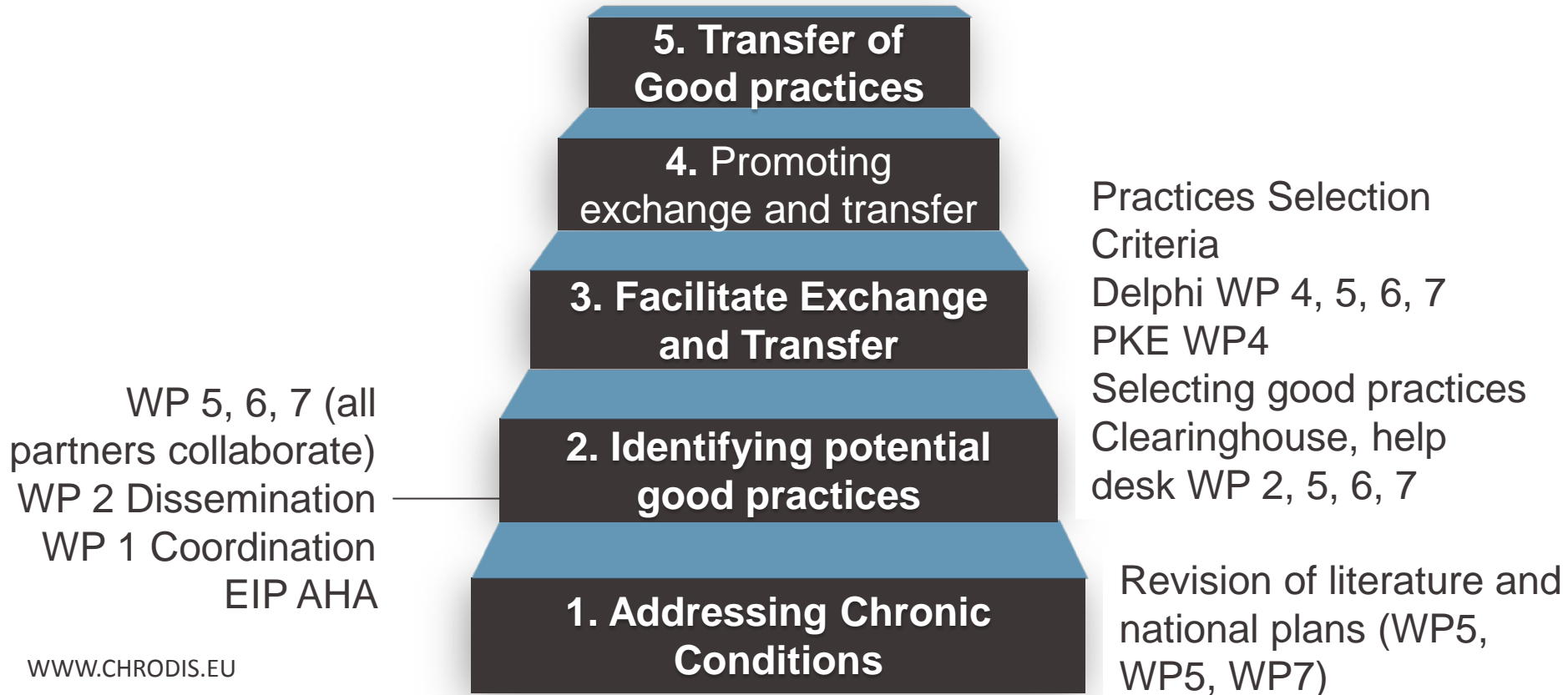
Objective:

- To discuss the roadmap towards the process of exchange and transfer of good practices

Starting point:

- “The objective of CHRODIS-JA is **to promote and facilitate a process of exchange and transfer of good practices between European countries and regions**, addressing chronic conditions, with a specific focus on health promotion and prevention of chronic conditions, multi-morbidity and diabetes.”

Steps for the workflow of practices in JA-CHRODIS



1. Addressing Chronic Conditions

- REVIEW EXISTING PRACTICES & LITERATURE
- WP 5 Health promotion and prevention of chronicity
- WP 6 Common guidance for care pathways for multi-morbidity
- WP 7 Diabetes: a case study

2. Identifying and collecting potential good practices

- WP 2 Dissemination
- WP 5, 6, 7
- WP 1 Coordination / EIP AHA
- All partners collaborate

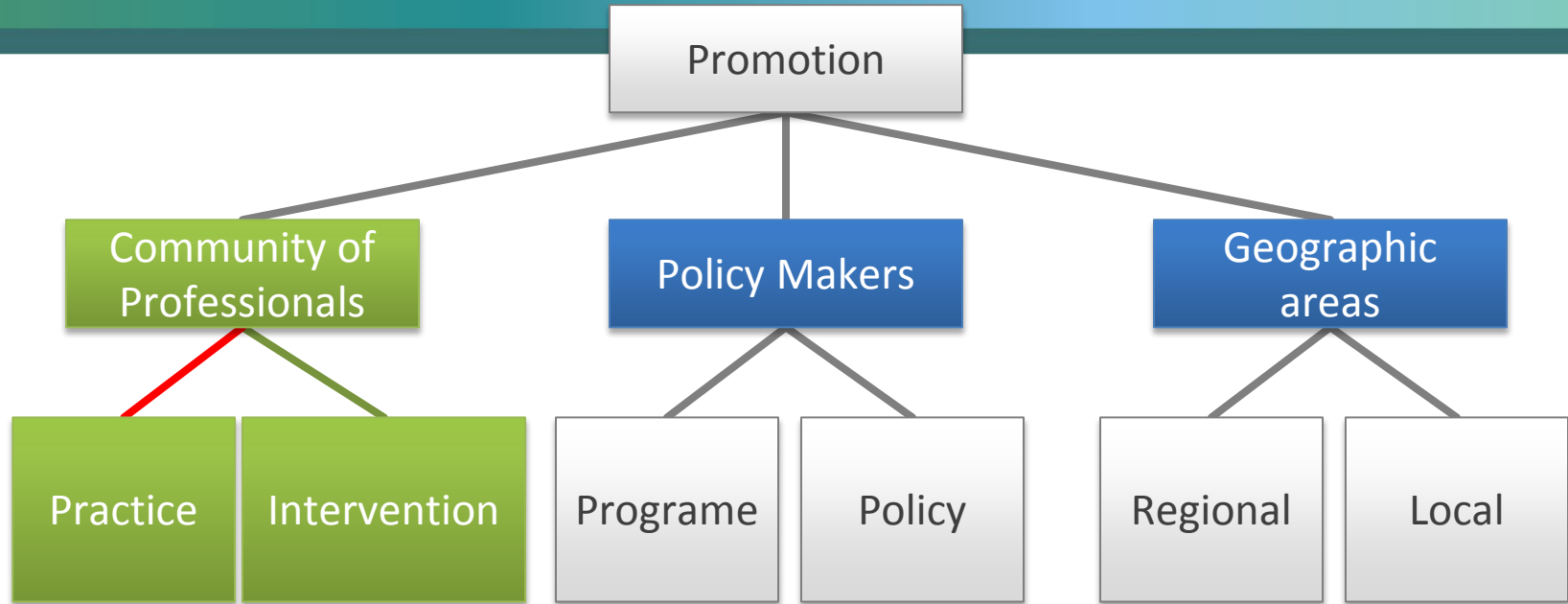
3. Facilitating Exchange and Transfer

- PRACTICES SELECTION CRITERIA Delphi WP 4, 5, 6, 7
- PLATFORM FOR KNOWLEDGE EXCHANGE WP 4
- SELECTING GOOD PRACTICES
- Clearinghouse, Help desk, WP4, WP 2, 5, 6, 7

4. Promoting transfer and exchange

- TRAINING & RECOMMENDATIONS
- WP 5 Conference seminars / Study visits
- WP 6 Case management training
- WP 7 Conferences seminars/ Recommendations guidelines

Promoting Transfer: identification of potential users/targets and dissemination



Potential sources

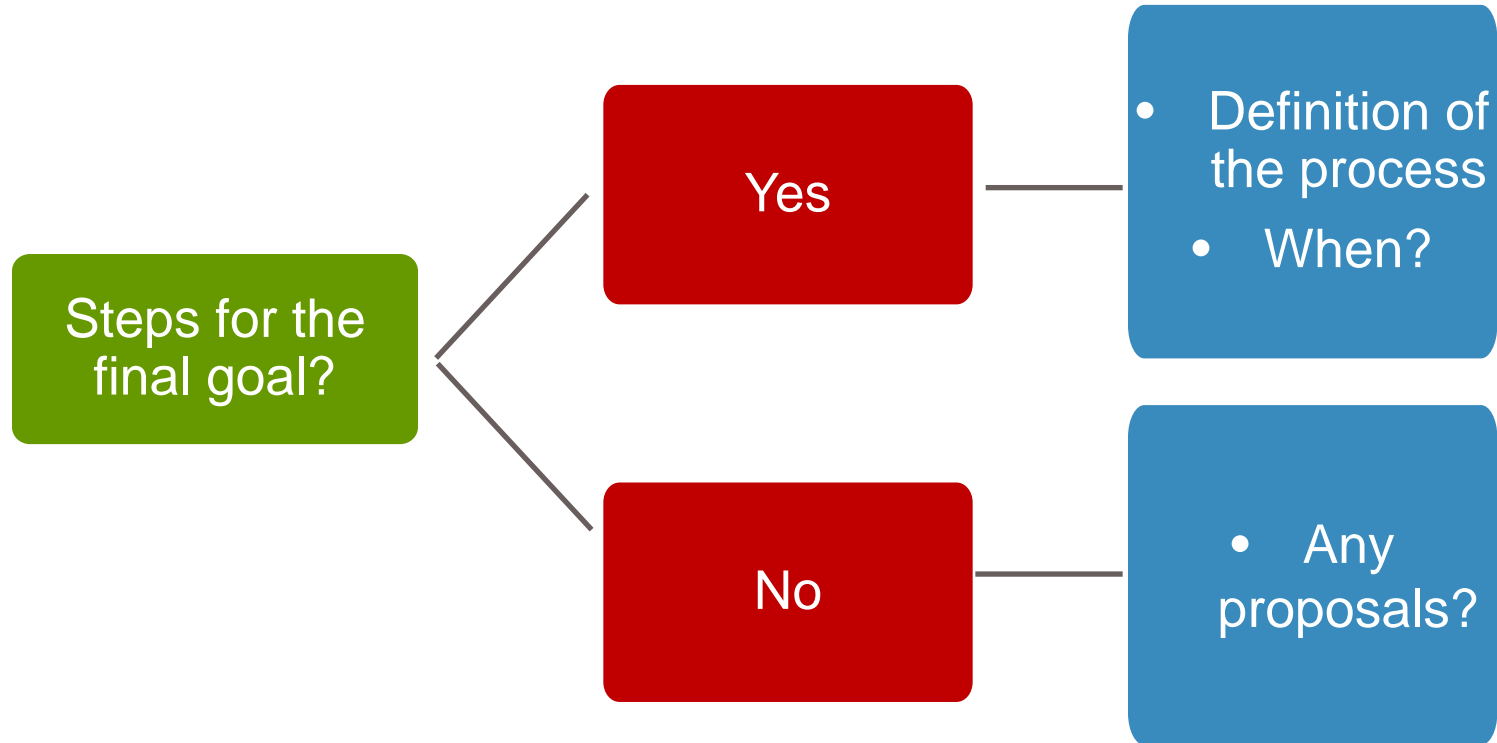
Contact Database developed by WP2

Partners contacts and environments

Transfer and Exchange

- Transfer of practices to the Clearing House through the assesment tool (Delphi process).
- Transfer of good practices to new settings, after they have been assesed and stored in the clearing house:
 - Proactively: Users seeks for the practice in the clearing house.
 - Indirectly: User is recommended to access the clearing house.
- Through help-desk dialogue.

Key decisions and their implications



The Joint Action on Chronic Diseases and Promoting Healthy Ageing across the Life Cycle (JA-CHRODIS)*



Co-funded by
the Health Programme
of the European Union

* This presentation arises from the Joint Action addressing chronic diseases and healthy ageing across the life cycle (JA-CHRODIS), which has received funding from the European Union, under the framework of the Health Programme (2008-2013).

Draft workplan Governing Board

Treviso, 11th June 2015



Background

- GB is expected to:
 - Provide strategic guidance for the development of the project.
 - Address to the sustainability of CHRODIS beyond the Joint Action.

Main deliverables

- Key deliverables:
 - For your information (FYI).
 - For feedback.

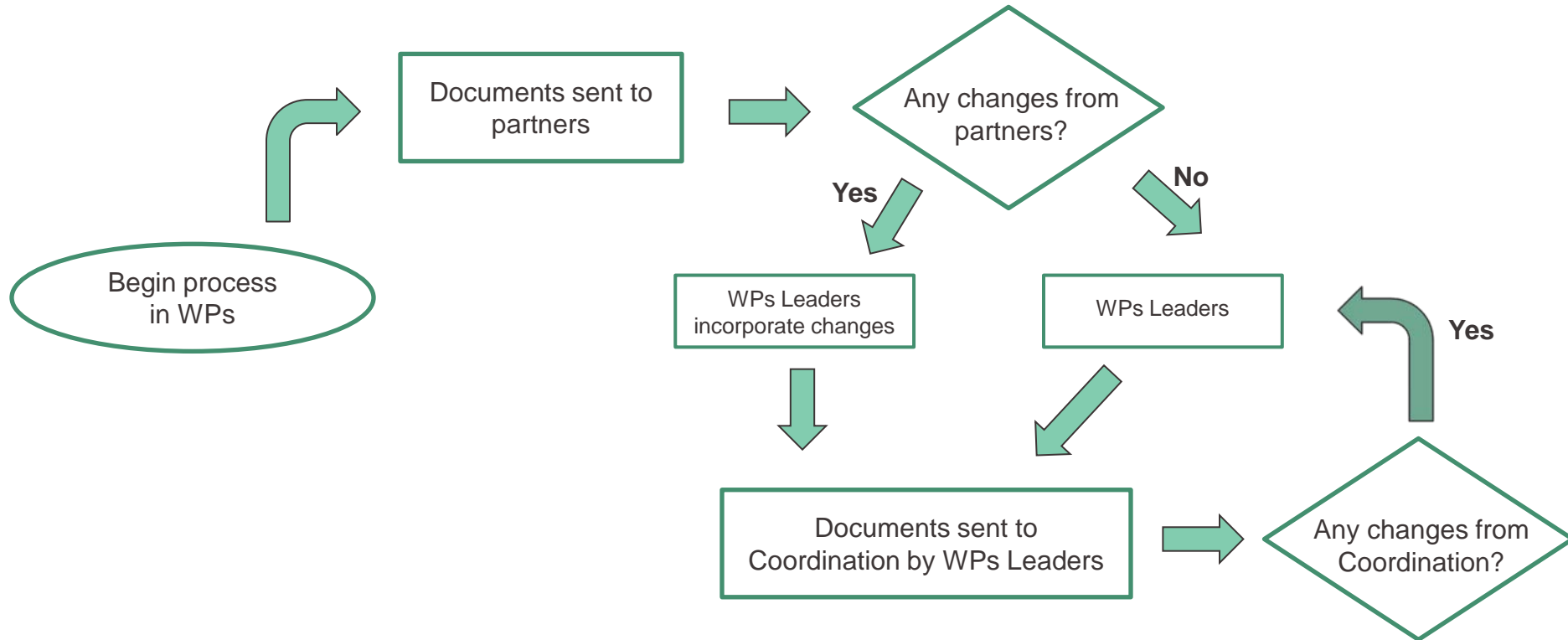
Criteria for reviewing

- Do you think that this deliverable **aligns with the interests of your country** in addressing chronicity?
- Which **barriers** would you find for the application of this deliverable in your country?
- Which **facilitators** would you find for the application of this deliverable in your country?
- Would it be **feasible to apply** this deliverable in your country?

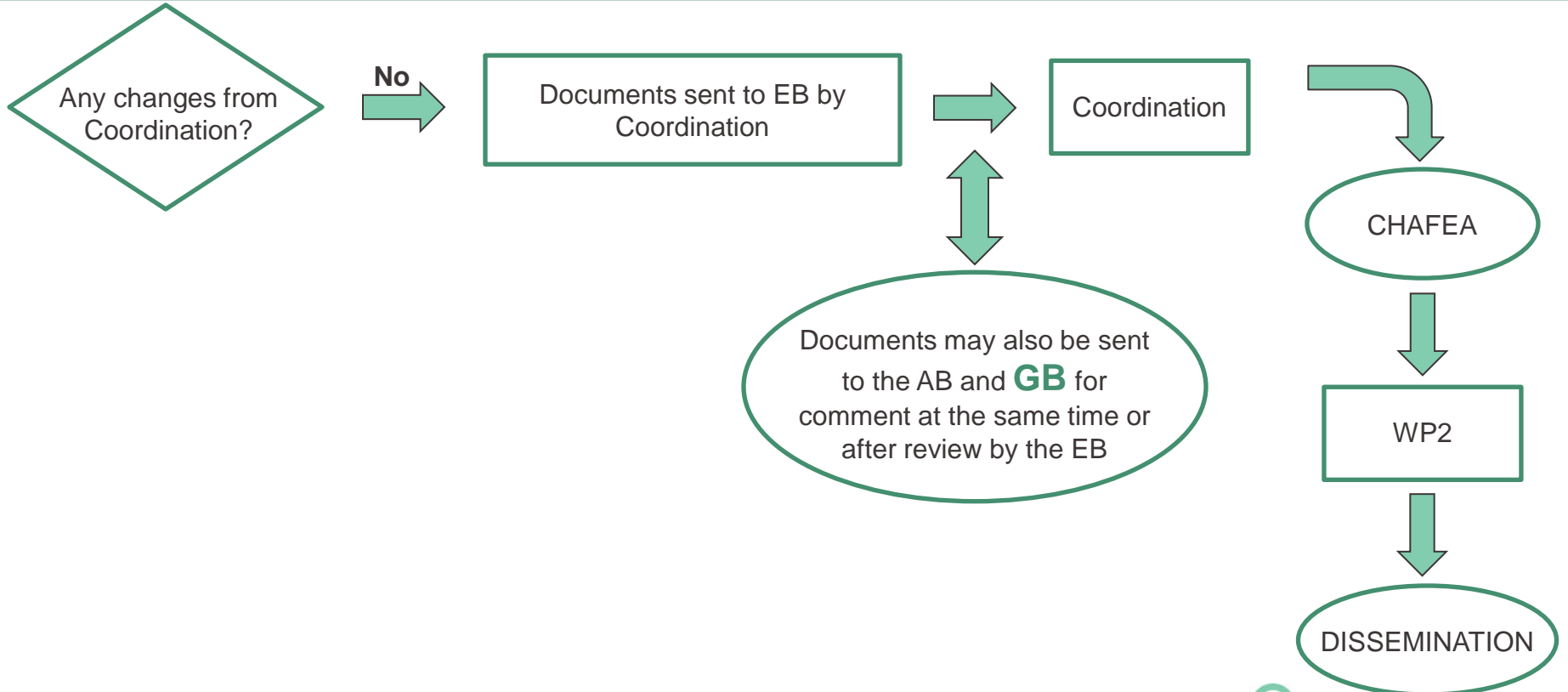
Selecting priority fields for good practices

- There are a high number of potentially transferrable good practices.
- Need to define priorities within the three fields defined in the JA-CHRODIS (health promotion and chronic diseases prevention; multi-morbid patients; diabetes)
- GB to define priorities where exchange of potential good practices has the greatest potential or expected added value for national ministries of health
- WP1 will conduct in 2015 a survey to GB members about their preferences and more urgent needs regarding practices in this three fields

Communication flow 1



Communication flow 2



Draft for 2014 & 2015

		2014 & 2015												
		J	F	M	A	M	J	J	A	S	O	N	D	
WP2	Website, promotional materials, stakeholder mapping and guidance document							FYI						
WP3	Interim evaluation reports												FYI	
WP4	Assesment criteria							FYI						
	Best practices selected							FYI						
	Help-desk services piloting												FYI	
	Clearinghouse and Digital Library piloting												FYI	
WP5	Selection criteria of good practices							FYI						
	Good practices selectedd							FYI						
	Country review							FYI						
WP6	Report from data analysis and evidence from literature to identify high care demanding population							FYI						
	Report on care pathways approaches for multimorbid chronic patients, including existing good practices												FYI	
	Assess and select good practices on management of multi-morbid patients												Feedback	
WP7	Mapping existing NDP												FYI	

Draft for 2016

		2016											
		J	F	M	A	M	J	J	A	S	O	N	D
WP2													
WP3	Final report												FYI
WP4	Help-desk							FYI					
	Clearinghouse and Digital Library							FYI					
WP5	Recommendation report on applicability and transferability of practices into different settings and countries												Feedback
WP6	Define multi-morbidity case management training programmes												Feedback
WP7	Recommendations to improve prevention of diabetes, and to improve the quality of care for people with diabetes							Feedback					
	Recommendations to improve the identification of high-risk people, early detection of diabetes and preventive interventions					Feedback							
	Cross national recommendations to improve the quality of care for people with diabetes					Feedback							
	Cross national recommendations on early non-pharmacologic intervention strategies						Feedback						
	Cross national recommendations and national adaptations on appropriate educational strategies and interventions						Feedback						
	NDP guideline		Feedback										

The Joint Action on Chronic Diseases and Promoting Healthy Ageing across the Life Cycle (JA-CHRODIS)*



Co-funded by
the Health Programme
of the European Union

* This presentation arises from the Joint Action addressing chronic diseases and healthy ageing across the life cycle (JA-CHRODIS), which has received funding from the European Union, under the framework of the Health Programme (2008-2013).